

**Manufacturer/Supplier:**

WUXI DONGLIN SCI&TECH DEVELOPMENT CO., LTD

**Address:** A1-203 Mingpin CityII, No.8 Xihudong Road, Liangxi District  
Wuxi Jiangsu Province, China

TELE: 86-510-82732223

FAX: 86-510-82720101-8014

**Web :** [www.dldevelop.com](http://www.dldevelop.com)

Email: [info@dldevelop.com.cn](mailto:info@dldevelop.com.cn)    [service@dldevelop.com.cn](mailto:service@dldevelop.com.cn)

**Product name:** Rabbit anti-PPP2R5A Antibody

**Catalog:** DL90923A

**Synonyms:** Serine/threonine-protein phosphatase 2A 56 kDa regulatory subunit alpha isoform; PP2A B subunit isoform B'-alpha; PP2A B subunit isoform B56-alpha; PP2A B subunit isoform PR61-alpha; PR61 alpha; PP2A B subunit isoform R5-alpha

**Immunogen:** KLH-conjugated synthetic peptide encompassing a sequence within the center region of human PPP2R5A. The exact sequence is proprietary.

**Form:** Liquid

**Concentration:** 1mg/mL

**Size:** 100 ul/50 ul

**Host:** Rabbit

**Reactivity:**

Human, Mouse, Rat, Bovine, Monkey, Pig

**Application:** WB, IF/IC**Clonality:** Polyclonal

**Dilution:** WB (1/500 - 1/1000),  
IF/IC (1/100 - 1/500)

**Entrez Gene:** 5525/226849

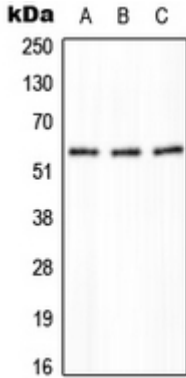
**SwissProt:** Q15172/Q6PD03

**Purification:** The antibody was purified by immunogen affinity chromatography.

**Buffer:** Liquid in 0.42% Potassium phosphate, 0.87% Sodium chloride, pH 7.3, 30% glycerol, and 0.01% sodium azide.

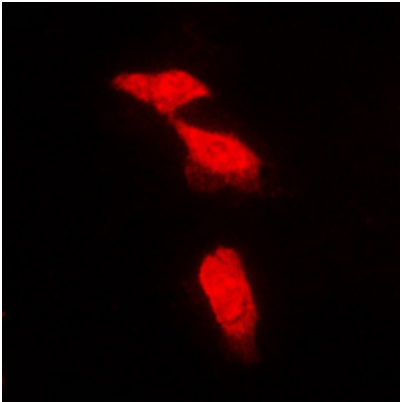
**WB description:**

Western blot analysis of PPP2R5A expression in HeLa (A), NIH3T3 (B), H9C2 (C) whole cell lysates.



### IF/ICC description:

Immunofluorescent analysis of PPP2R5A staining in NIH3T3 cells. Formalin-fixed cells were permeabilized with 0.1% Triton X-100 in TBS for 5-10 minutes and blocked with 3% BSA-PBS for 30 minutes at room temperature. Cells were probed with the primary antibody.



### Storage:



Store at -20°C. Avoid repeated freeze / thaw cycles.