

Manufacturer/Supplier:

WUXI DONGLIN SCI&TECH DEVELOPMENT CO., LTD

Address: A1-203 Mingpin CityII, No.8 Xihudong Road, Liangxi District
Wuxi Jiangsu Province, China

TELE: 86-510-82732223

FAX: 86-510-82720101-8014

Web : www.dldevelop.com

Email: info@dldevelop.com.cn service@dldevelop.com.cn

Product name: Rabbit anti-PLC gamma 2 (pY1217) Antibody

Catalog: DL90899A

Synonyms: 1-phosphatidylinositol 4,5-bisphosphate phosphodiesterase gamma-2; Phosphoinositide phospholipase C-gamma-2; Phospholipase C-IV; PLC-IV; Phospholipase C-gamma-2; PLC-gamma-2

Immunogen: KLH-conjugated synthetic peptide encompassing a sequence within the C-term region of human PLC gamma 2. The exact sequence is proprietary.

Form: Liquid

Concentration: 1mg/mL

Size: 100 ul/50 ul

Host: Rabbit

Reactivity:

Application: WB

Human, Mouse, Rat, Monkey

Clonality: Polyclonal

Dilution: WB (1/500 - 1/1000)

Entrez Gene: 5336/234779/29337

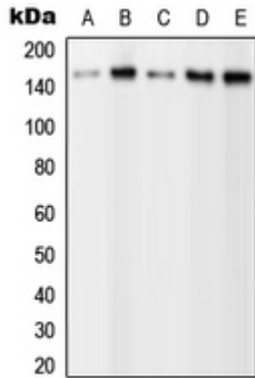
SwissProt: P16885/Q8CIH5/P24135

Purification: The antibody was purified by immunogen affinity chromatography.

Buffer: Liquid in 0.42% Potassium phosphate, 0.87% Sodium chloride, pH 7.3, 30% glycerol, and 0.01% sodium azide.

WB description:

Western blot analysis of PLC gamma 2 (pY1217) expression in HEK293T EGF-treated (A), A431 (B), NIH3T3 (C), SP2/0 EGF-treated (D), H9C2 EGF-treated (E) whole cell lysates.



Storage:

Store at -20°C. Avoid repeated freeze / thaw cycles.