

Manufacturer/Supplier:

WUXI DONGLIN SCI&TECH DEVELOPMENT CO., LTD

Address: A1-203 Mingpin CityII, No.8 Xihudong Road, Liangxi District
Wuxi Jiangsu Province, China

TELE: 86-510-82732223

FAX: 86-510-82720101-8014

Web : www.dldevelop.com

Email: info@dldevelop.com.cn service@dldevelop.com.cn

Product name: Rabbit anti-PIN1 (pS16) Antibody

Catalog: DL90893A

Synonyms: Peptidyl-prolyl cis-trans isomerase
NIMA-interacting 1; Peptidyl-prolyl cis-trans
isomerase Pin1; PPIase Pin1; Rotamase Pin1

Immunogen: KLH-conjugated synthetic peptide encompassing a
sequence within the N-term region of human PIN1.
The exact sequence is proprietary.

Form: Liquid

Concentration: 1mg/mL

Size: 100 ul/50 ul

Host: Rabbit

Reactivity:
Human, Mouse, Rat, Bovine, Monke

Application: WB

y,Pig,Zebrafish

Clonality: Polyclonal

Dilution: WB (1/500 - 1/1000)

Entrez Gene: 5300/23988

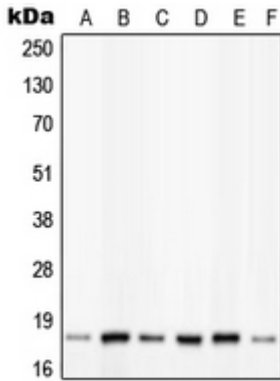
SwissProt: Q13526/Q9QUR7

Purification: The antibody was purified by immunogen affinity chromatography.

Buffer: Liquid in 0.42% Potassium phosphate, 0.87% Sodium chloride, pH 7.3, 30% glycerol, and 0.01% sodium azide.

WB description:

Western blot analysis of PIN1 (pS16) expression in HeLa insulin-treated (A), K562 (B), NIH3T3 (C), Raw264.7 insulin-treated (D), PC12 insulin-treated (E), C6 calyculin A-treated (F) whole cell lysates.



Storage:

Store at -20°C. Avoid repeated freeze / thaw cycles.