

Manufacturer/Supplier:

WUXI DONGLIN SCI&TECH DEVELOPMENT CO., LTD

Address: A1-203 Mingpin CityII, No.8 Xihudong Road, Liangxi District
Wuxi Jiangsu Province, China

TELE: 86-510-82732223

FAX: 86-510-82720101-8014

Web : www.dldevelop.com

Email: info@dldevelop.com.cn service@dldevelop.com.cn

Product name: Rabbit anti-PI3K p85 beta Antibody

Catalog: DL90891A

Synonyms: Phosphatidylinositol 3-kinase regulatory subunit beta; PI3-kinase regulatory subunit beta; PI3K regulatory subunit beta; PtdIns-3-kinase regulatory subunit beta; Phosphatidylinositol 3-kinase 85 kDa regulatory subunit beta; PI3-kinase subunit p85-beta; Pt

Immunogen: KLH-conjugated synthetic peptide encompassing a sequence within the center region of human PI3K p85 beta. The exact sequence is proprietary.

Form: Liquid

Concentration: 1mg/mL

Size: 100 ul/50 ul

Host: Rabbit

Reactivity:

Human, Mouse, Rat, Bovine

Application: WB**Clonality:** Polyclonal**Dilution:** WB (1/500 - 1/1000)**Entrez Gene:**

5296/18709

SwissProt:

O00459/O08908/Q63788

Purification:

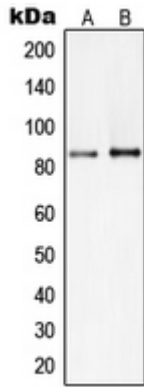
The antibody was purified by immunogen affinity chromatography.

Buffer:

Liquid in 0.42% Potassium phosphate, 0.87% Sodium chloride, pH 7.3, 30% glycerol, and 0.01% sodium azide.

WB description:

Western blot analysis of PI3K p85 beta expression in HepG2 (A), Raji (B) whole cell lysates.



Storage:

Store at -20°C. Avoid repeated freeze / thaw cycles.