

Manufacturer/Supplier:

WUXI DONGLIN SCI&TECH DEVELOPMENT CO., LTD

Address: A1-203 Mingpin CityII, No.8 Xihudong Road, Liangxi District
Wuxi Jiangsu Province, China

TELE: 86-510-82732223

FAX: 86-510-82720101-8014

Web : www.dldevelop.com

Email: info@dldevelop.com.cn service@dldevelop.com.cn

Product name: Rabbit anti-PAK2 (pS20) Antibody

Catalog: DL90849A

Synonyms: Serine/threonine-protein kinase PAK 2;
Gamma-PAK; PAK65; S6/H4 kinase; p21-activated
kinase 2; PAK-2; p58

Immunogen: KLH-conjugated synthetic peptide encompassing a
sequence within the N-term region of human PAK2.
The exact sequence is proprietary.

Form: Liquid

Concentration: 1mg/mL

Size: 100 ul/50 ul

Host: Rabbit

Reactivity:
Human, Mouse, Rat, Rabbit

Application: WB

Clonality: Polyclonal

Dilution: WB (1/500 - 1/1000)

Entrez Gene: 5062/224105/100910732; 29432

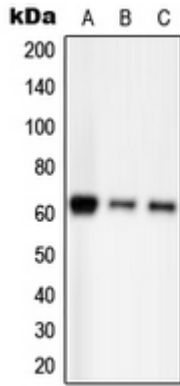
SwissProt: Q13177/Q8CIN4/Q64303

Purification: The antibody was purified by immunogen affinity chromatography.

Buffer: Liquid in 0.42% Potassium phosphate, 0.87% Sodium chloride, pH 7.3, 30% glycerol, and 0.01% sodium azide.

WB description:

Western blot analysis of PAK2 (pS20) expression in HEK293T EGF-treated (A), Raw264.7 EGF-treated (B), H9C2 EGF-treated (C) whole cell lysates.



Storage:

Store at -20°C. Avoid repeated freeze / thaw cycles.