

Manufacturer/Supplier:

WUXI DONGLIN SCI&TECH DEVELOPMENT CO., LTD

Address: A1-203 Mingpin CityII, No.8 Xihudong Road, Liangxi District
Wuxi Jiangsu Province, China

TELE: 86-510-82732223

FAX: 86-510-82720101-8014

Web : www.dldevelop.com

Email: info@dldevelop.com.cn service@dldevelop.com.cn

Product name: Rabbit anti-NVL Antibody

Catalog: DL90835A

Synonyms: Nuclear valosin-containing protein-like; NVLp;
Nuclear VCP-like protein

Immunogen: KLH-conjugated synthetic peptide encompassing a
sequence within the center region of human NVL.
The exact sequence is proprietary.

Form: Liquid

Concentration: 1mg/mL

Size: 100 ul/50 ul

Host: Rabbit

Reactivity: Human, Mouse, Rat

Application: WB

Clonality: Polyclonal

Dilution: WB (1/500 - 1/1000)

Entrez Gene: 4931/67459

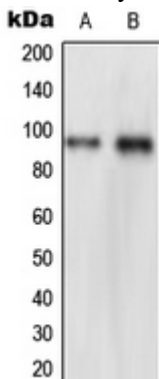
SwissProt: O15381/Q9DBY8

Purification: The antibody was purified by immunogen affinity chromatography.

Buffer: Liquid in 0.42% Potassium phosphate, 0.87% Sodium chloride, pH 7.3, 30% glycerol, and 0.01% sodium azide.

WB description:

Western blot analysis of NVL expression in HeLa (A), THP1 (B) whole cell lysates.



Storage:



Store at -20°C. Avoid repeated freeze / thaw cycles.