

Manufacturer/Supplier:

WUXI DONGLIN SCI&TECH DEVELOPMENT CO., LTD

Address: A1-203 Mingpin CityII, No.8 Xihudong Road. Liangxi District
Wuxi Jiangsu Province, China

TELE: 86-510-82732223

FAX: 86-510-82720101-8014

Web : www.dldevelop.com

Email: info@dldevelop.com.cn service@dldevelop.com.cn

Product name: Rabbit anti-NEDD8 Antibody

Catalog: DL90793A

Synonyms: NEDD8; Neddylin; Neural precursor cell expressed developmentally down-regulated protein 8;
NEDD-8; Ubiquitin-like protein Nedd8

Immunogen: KLH-conjugated synthetic peptide encompassing a sequence within the N-term region of human NEDD8. The exact sequence is proprietary.

Form: Liquid

Concentration: 1mg/mL

Size: 100 ul/50 ul

Host: Rabbit

Reactivity: Human, Mouse, Rat, Bovine, Dog, R

Application: WB, IHC, IP

abbit

Clonality: Polyclonal

Dilution: WB (1/500 - 1/1000),
IHC (1/100 - 1/200), IP (1/10 -
1/100)

Entrez Gene: 4738/18002/25490

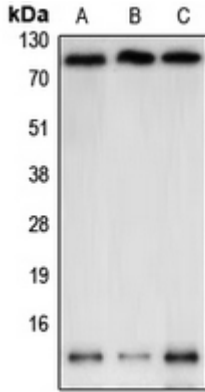
SwissProt: Q15843/P29595/Q71UE8

Purification: The antibody was purified by immunogen affinity chromatography.

Buffer: Liquid in 0.42% Potassium phosphate, 0.87% Sodium chloride, pH 7.3, 30% glycerol, and 0.01% sodium azide.

WB description:

Western blot analysis of NEDD8 expression in BJAB (A), K562 (B), HeLa (C) whole cell lysates.

**IHC description:**

Immunohistochemical analysis of NEDD8 staining in human breast cancer formalin fixed paraffin embedded tissue section. The section was pre-treated using heat mediated antigen retrieval with sodium citrate buffer (pH 6.0). The section was then incubated with the antibody at room temperature and detected using an HRP conjugated compact polymer system. DAB was used as the chromogen. The section was then counterstained with haematoxylin and mounted with DPX.

IP description:**Storage:**

Store at -20°C. Avoid repeated freeze / thaw cycles.