

Manufacturer/Supplier:

WUXI DONGLIN SCI&TECH DEVELOPMENT CO., LTD

Address: A1-203 Mingpin CityII, No.8 Xihudong Road, Liangxi District
Wuxi Jiangsu Province, China

TELE: 86-510-82732223

FAX: 86-510-82720101-8014

Web : www.dldevelop.com

Email: info@dldevelop.com.cn service@dldevelop.com.cn

Product name: Rabbit anti-MMP14 Antibody

Catalog: DL90758A

Synonyms: Matrix metalloproteinase-14; MMP-14; MMP-X1;
Membrane-type matrix metalloproteinase 1;
MT-MMP 1; MTMMP1; Membrane-type-1 matrix
metalloproteinase; MT1-MMP; MT1MMP

Immunogen: KLH-conjugated synthetic peptide encompassing a
sequence within the center region of human
MMP14. The exact sequence is proprietary.

Form: Liquid

Concentration: 1mg/mL

Size: 100 ul/50 ul

Host: Rabbit

Reactivity:

Application: WB

Human, Mouse, Rat, Bovine, Pig, Rabbit

Clonality: Polyclonal

Dilution: WB (1/500 - 1/1000)

Entrez Gene: 4323/17387/81707

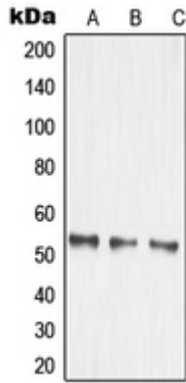
SwissProt: P50281/P53690/Q10739

Purification: The antibody was purified by immunogen affinity chromatography.

Buffer: Liquid in 0.42% Potassium phosphate, 0.87% Sodium chloride, pH 7.3, 30% glycerol, and 0.01% sodium azide.

WB description:

Western blot analysis of MMP14 expression in HEK293T (A), mouse kidney (B), rat brain (C) whole cell lysates.



Storage:

Store at -20°C. Avoid repeated freeze / thaw cycles.