

Manufacturer/Supplier:

WUXI DONGLIN SCI&TECH DEVELOPMENT CO., LTD

Address: A1-203 Mingpin CityII, No.8 Xihudong Road, Liangxi District
Wuxi Jiangsu Province, China

TELE: 86-510-82732223

FAX: 86-510-82720101-8014

Web : www.dldevelop.com

Email: info@dldevelop.com.cn service@dldevelop.com.cn

Product name: Rabbit anti-MCM4 (pS54) Antibody

Catalog: DL90728A

Synonyms: CDC21; DNA replication licensing factor MCM4;
CDC21 homolog; P1-CDC21

Immunogen: KLH-conjugated synthetic peptide encompassing a
sequence within the N-term region of human
MCM4. The exact sequence is proprietary.

Form: Liquid

Concentration: 1mg/mL

Size: 100 ul/50 ul

Host: Rabbit

Reactivity: Human, Mouse, Rat

Application: WB

Clonality: Polyclonal

Dilution: WB (1/500 - 1/1000)

Entrez Gene: 4173/17217

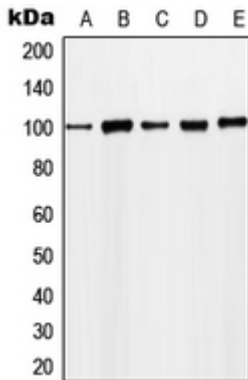
SwissProt: P33991/P49717

Purification: The antibody was purified by immunogen affinity chromatography.

Buffer: Liquid in 0.42% Potassium phosphate, 0.87% Sodium chloride, pH 7.3, 30% glycerol, and 0.01% sodium azide.

WB description:

Western blot analysis of MCM4 (pS54) expression in LO2 EGF-treated (A), HeLa (B), NIH3T3 (C), SP2/0 EGF-treated (D), H9C2 EGF-treated (E) whole cell lysates.



Storage:

Store at -20°C. Avoid repeated freeze / thaw cycles.