

Manufacturer/Supplier:

WUXI DONGLIN SCI&TECH DEVELOPMENT CO., LTD

Address: A1-203 Mingpin CityII, No.8 Xihudong Road, Liangxi District
Wuxi Jiangsu Province, China

TELE: 86-510-82732223

FAX: 86-510-82720101-8014

Web : www.dldevelop.com

Email: info@dldevelop.com.cn service@dldevelop.com.cn

Product name: Rabbit anti-SMAD7 Antibody

Catalog: DL90712A

Synonyms: MADH7; MADH8; Mothers against decapentaplegic homolog 7; MAD homolog 7; Mothers against DPP homolog 7; Mothers against decapentaplegic homolog 8; MAD homolog 8; Mothers against DPP homolog 8; SMAD family member 7; SMAD 7; Smad7; hSMAD7

Immunogen: KLH-conjugated synthetic peptide encompassing a sequence within the center region of human SMAD7. The exact sequence is proprietary.

Form: Liquid

Concentration: 1mg/mL

Size: 100 ul/50 ul

Host: Rabbit

Reactivity:

Human, Mouse, Rat, Pig

Application: WB**Clonality:** Polyclonal**Dilution:** WB (1/500 - 1/1000)**Entrez Gene:**

4092/17131/81516

SwissProt:

O15105/O35253/O88406

Purification:

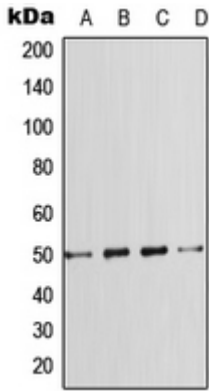
The antibody was purified by immunogen affinity chromatography.

Buffer:

Liquid in 0.42% Potassium phosphate, 0.87% Sodium chloride, pH 7.3, 30% glycerol, and 0.01% sodium azide.

WB description:

Western blot analysis of SMAD7 expression in HeLa (A), A431 (B), SP2/0 (C), PC12 (D) whole cell lysates.



Storage:

Store at -20°C. Avoid repeated freeze / thaw cycles.