

Manufacturer/Supplier:

WUXI DONGLIN SCI&TECH DEVELOPMENT CO., LTD

Address: A1-203 Mingpin CityII, No.8 Xihudong Road. Liangxi District
Wuxi Jiangsu Province, China

TELE: 86-510-82732223

FAX: 86-510-82720101-8014

Web : www.dldevelop.com

Email: info@dldevelop.com.cn service@dldevelop.com.cn

Product name: Rabbit anti-CD326 Antibody

Catalog: DL90700A

Synonyms: GA733-2; M1S2; M4S1; MIC18; TACSTD1;
TROP1; Epithelial cell adhesion molecule;
Ep-CAM; Adenocarcinoma-associated antigen; Cell
surface glycoprotein Trop-1; Epithelial cell surface
antigen; Epithelial glycoprotein; EGP; Epithelial
glycoprotein 314; EGP314;

Immunogen: KLH-conjugated synthetic peptide encompassing a
sequence within the center region of human CD326.
The exact sequence is proprietary.

Form: Liquid

Concentration: 1mg/mL

Size: 100 ul/50 ul

Host: Rabbit

Reactivity: Human

Application: WB, IP

Clonality: Polyclonal

Dilution: WB (1/500 - 1/1000), IP
(1/10 - 1/100)

Entrez Gene: 4072

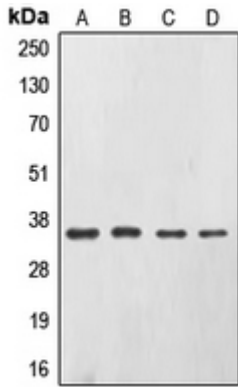
SwissProt: P16422

Purification: The antibody was purified by immunogen affinity chromatography.

Buffer: Liquid in 0.42% Potassium phosphate, 0.87% Sodium chloride, pH 7.3, 30% glycerol, and 0.01% sodium azide.

WB description:

Western blot analysis of CD326 expression in A431 (A), SW480 (B), HepG2 (C), Caco2 (D) whole cell lysates.



IP description:

Storage:

Store at -20°C. Avoid repeated freeze / thaw cycles.