

**Manufacturer/Supplier:**

WUXI DONGLIN SCI&TECH DEVELOPMENT CO., LTD

**Address:** A1-203 Mingpin CityII, No.8 Xihudong Road, Liangxi District  
Wuxi Jiangsu Province, China

TELE: 86-510-82732223

FAX: 86-510-82720101-8014

**Web :** [www.dldevelop.com](http://www.dldevelop.com)

Email: [info@dldevelop.com.cn](mailto:info@dldevelop.com.cn) [service@dldevelop.com.cn](mailto:service@dldevelop.com.cn)

**Product name:** Rabbit anti-LTBR Antibody

**Catalog:** DL90698A

**Synonyms:** D12S370; TNFCR; TNFR3; TNFRSF3; Tumor necrosis factor receptor superfamily member 3; Lymphotoxin-beta receptor; Tumor necrosis factor C receptor; Tumor necrosis factor receptor 2-related protein; Tumor necrosis factor receptor type III; TNF-RIII; TNFR-III

**Immunogen:** KLH-conjugated synthetic peptide encompassing a sequence within the N-term region of human LTBR. The exact sequence is proprietary.

**Form:** Liquid

**Concentration:** 1mg/mL

**Size:** 100 ul/50 ul

**Host:** Rabbit

**Reactivity:** Human

**Application:** WB

**Clonality:** Polyclonal

**Dilution:** WB (1/500 - 1/1000)

**Entrez Gene:** 4055

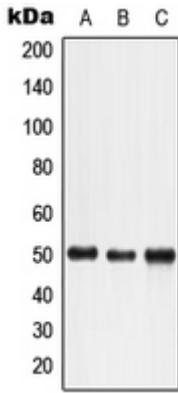
**SwissProt:** P36941

**Purification:** The antibody was purified by immunogen affinity chromatography.

**Buffer:** Liquid in 0.42% Potassium phosphate, 0.87% Sodium chloride, pH 7.3, 30% glycerol, and 0.01% sodium azide.

**WB description:**

Western blot analysis of LTBR expression in HeLa (A), HuT78 (B), K562 (C) whole cell lysates.



**Storage:**

Store at -20°C. Avoid repeated freeze / thaw cycles.