

**Manufacturer/Supplier:**

WUXI DONGLIN SCI&TECH DEVELOPMENT CO., LTD

**Address:** A1-203 Mingpin CityII, No.8 Xihudong Road. Liangxi District  
Wuxi Jiangsu Province, China

TELE: 86-510-82732223

FAX: 86-510-82720101-8014

**Web :** [www.dldevelop.com](http://www.dldevelop.com)

Email: [info@dldevelop.com.cn](mailto:info@dldevelop.com.cn)    [service@dldevelop.com.cn](mailto:service@dldevelop.com.cn)

**Product name:** Rabbit anti-Cytokeratin 7 Antibody

**Catalog:** DL90657A

**Synonyms:** SCL; Keratin type II cytoskeletal 7; Cytokeratin-7;  
CK-7; Keratin-7; K7; Sarcolectin; Type-II keratin  
Kb7

**Immunogen:** KLH-conjugated synthetic peptide encompassing a  
sequence within the C-term region of human  
Cytokeratin 7. The exact sequence is proprietary.

**Form:** Liquid

**Concentration:** 1mg/mL

**Size:** 100 ul/50 ul

**Host:** Rabbit

**Reactivity:** Human

**Application:** WB, IHC, IF/IC

**Clonality:** Polyclonal

**Dilution:** WB (1/500 - 1/1000),  
IHC (1/100 - 1/200), IF/IC (1/100 -  
1/500)

**Entrez Gene:** 3855

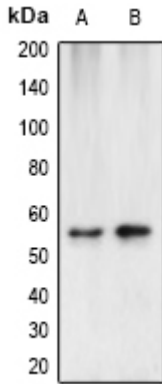
**SwissProt:** P08729

**Purification:** The antibody was purified by immunogen affinity chromatography.

**Buffer:** Liquid in 0.42% Potassium phosphate, 0.87% Sodium chloride, pH 7.3, 30% glycerol, and 0.01% sodium azide.

**WB description:**

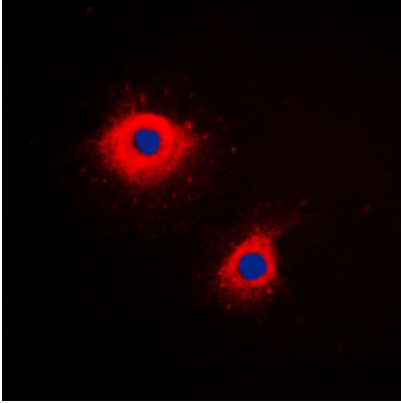
Western blot analysis of Cytokeratin 7 expression in HeLa (A), A431 (B) whole cell lysates.



### IHC description:

### IF/ICC description:

Immunofluorescent analysis of Cytokeratin 7 staining in HeLa cells. Formalin-fixed cells were permeabilized with 0.1% Triton X-100 in TBS for 5-10 minutes and blocked with 3% BSA-PBS for 30 minutes at room temperature. Cells were probed with the primary a



**Storage:**

Store at -20°C. Avoid repeated freeze / thaw cycles.