

Manufacturer/Supplier:

WUXI DONGLIN SCI&TECH DEVELOPMENT CO., LTD

Address: A1-203 Mingpin CityII, No.8 Xihudong Road, Liangxi District
Wuxi Jiangsu Province, China

TELE: 86-510-82732223

FAX: 86-510-82720101-8014

Web : www.dldevelop.com

Email: info@dldevelop.com.cn service@dldevelop.com.cn

Product name: Rabbit anti-Kir4.1 Antibody

Catalog: DL90650A

Synonyms: ATP-sensitive inward rectifier potassium channel 10; ATP-dependent inwardly rectifying potassium channel Kir4.1; Inward rectifier K(+) channel Kir1.2; Potassium channel, inwardly rectifying subfamily J member 10

Immunogen: KLH-conjugated synthetic peptide encompassing a sequence within the center region of human Kir4.1. The exact sequence is proprietary.

Form: Liquid

Concentration: 1mg/mL

Size: 100 ul/50 ul

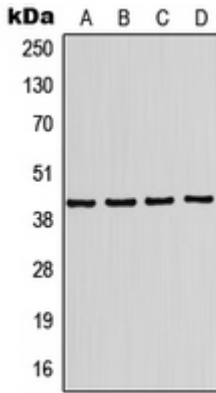
Host: Rabbit

Reactivity:

Human, Mouse, Rat, Bovine

Application: WB**Clonality:** Polyclonal**Dilution:** WB (1/500 - 1/1000)**Entrez Gene:** 3766/16513/29718**SwissProt:** P78508/Q9JM63/P49655**Purification:** The antibody was purified by immunogen affinity chromatography.**Buffer:** Liquid in 0.42% Potassium phosphate, 0.87% Sodium chloride, pH 7.3, 30% glycerol, and 0.01% sodium azide.**WB description:**

Western blot analysis of Kir4.1 expression in HL60 (A), Jurkat (B), mouse brain (C), rat brain (D) whole cell lysates.



Storage:

Store at -20°C. Avoid repeated freeze / thaw cycles.