

Manufacturer/Supplier:

WUXI DONGLIN SCI&TECH DEVELOPMENT CO., LTD

Address: A1-203 Mingpin CityII, No.8 Xihudong Road, Liangxi District
Wuxi Jiangsu Province, China

TELE: 86-510-82732223

FAX: 86-510-82720101-8014

Web : www.dldevelop.com

Email: info@dldevelop.com.cn service@dldevelop.com.cn

Product name: Rabbit anti-CD61 Antibody

Catalog: DL90617A

Synonyms: GP3A; Integrin beta-3; Platelet membrane glycoprotein IIIa; GPIIIa; CD61

Immunogen: KLH-conjugated synthetic peptide encompassing a sequence within the C-term region of human CD61. The exact sequence is proprietary.

Form: Liquid

Concentration: 1mg/mL

Size: 100 ul/50 ul

Host: Rabbit

Reactivity:
Human, Mouse, Rat, Bovine, Dog, Monkey, Pig, Rabbit, Sheep

Application: WB, IHC, IF/IC, IP

Clonality: Polyclonal

Dilution: WB (1/500 - 1/1000),
IHC (1/100 - 1/200), IP (1/10 -
1/100), FC (1/100 - 1/300), ChIP
(Use at an assay dependent
concentration)

Entrez Gene: 3725/16476/24516

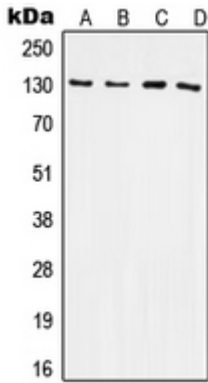
SwissProt: P05412/P05627/P17325

Purification: The antibody was purified by immunogen affinity chromatography.

Buffer: Liquid in 0.42% Potassium phosphate, 0.87% Sodium chloride, pH 7.3, 30% glycerol, and 0.01% sodium azide.

WB description:

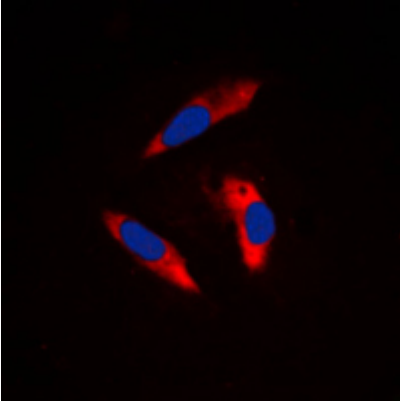
Western blot analysis of c-Jun expression in HeLa (A), U2OS (B), HCT116 (C), NIH3T3 (D), PC12 (E), rat kidney (F) whole cell lysates.



IHC description:

Immunohistochemical analysis of c-Jun staining in human breast cancer formalin fixed paraffin embedded tissue section. The section was pre-treated using heat mediated antigen retrieval with sodium citrate buffer (pH 6.0). The section was then incubated with the antibody at room temperature and detected using an HRP conjugated compact polymer system. DAB was used as the chromogen. The section was then counterstained with haematoxylin and mounted with DPX.

IF/ICC description:



IP description:

Immunoprecipitation of c-Jun from 0.5mg HEK293T whole cell extract lysate, using 5ug of anti-c-Jun Antibody and 50ul of protein G magnetic beads (+). No antibody was added to the control (-). The antibody was incubated under agitation with Protein G bead

Storage:

Store at -20°C. Avoid repeated freeze / thaw cycles.