

Manufacturer/Supplier:

WUXI DONGLIN SCI&TECH DEVELOPMENT CO., LTD

Address: A1-203 Mingpin CityII, No.8 Xihudong Road, Liangxi District
Wuxi Jiangsu Province, China

TELE: 86-510-82732223

FAX: 86-510-82720101-8014

Web : www.dldevelop.com

Email: info@dldevelop.com.cn service@dldevelop.com.cn

Product name: Rabbit anti-IL-12B Antibody

Catalog: DL90597A

Synonyms: NKSF2; Interleukin-12 subunit beta; IL-12B;
Cytotoxic lymphocyte maturation factor 40 kDa
subunit; CLMF p40; IL-12 subunit p40; NK cell
stimulatory factor chain 2; NKSF2

Immunogen: KLH-conjugated synthetic peptide encompassing a
sequence within the center region of human IL-12B.
The exact sequence is proprietary.

Form: Liquid

Concentration: 1mg/mL

Size: 100 ul/50 ul

Host: Rabbit

Reactivity: Human

Application: WB

Clonality: Polyclonal

Dilution: WB (1/500 - 1/1000)

Entrez Gene: 3593

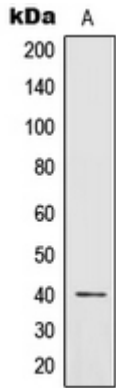
SwissProt: P29460

Purification: The antibody was purified by immunogen affinity chromatography.

Buffer: Liquid in 0.42% Potassium phosphate, 0.87% Sodium chloride, pH 7.3, 30% glycerol, and 0.01% sodium azide.

WB description:

Western blot analysis of IL-12B expression in human brain (A) whole cell lysates.



Storage:

Store at -20°C. Avoid repeated freeze / thaw cycles.