

Manufacturer/Supplier:

WUXI DONGLIN SCI&TECH DEVELOPMENT CO., LTD

Address: A1-203 Mingpin CityII, No.8 Xihudong Road, Liangxi District
Wuxi Jiangsu Province, China

TELE: 86-510-82732223

FAX: 86-510-82720101-8014

Web : www.dldevelop.com

Email: info@dldevelop.com.cn service@dldevelop.com.cn

Product name: Rabbit anti-HSP27 (pS15) Antibody

Catalog: DL90557A

Synonyms: HSP27; HSP28; Heat shock protein beta-1; HspB1;
28 kDa heat shock protein; Estrogen-regulated 24
kDa protein; Heat shock 27 kDa protein; HSP 27;
Stress-responsive protein 27; SRP27

Immunogen: KLH-conjugated synthetic peptide encompassing a
sequence within the N-term region of human
HSP27. The exact sequence is proprietary.

Form: Liquid

Concentration: 1mg/mL

Size: 100 ul/50 ul

Host: Rabbit

Reactivity:

Application: WB, IHC, IP

Human,Bovine,Monkey

Clonality: Polyclonal

Dilution: WB (1/500 - 1/1000),
IHC (1/100 - 1/200), IP (1/10 -
1/100)

Entrez Gene: 3315

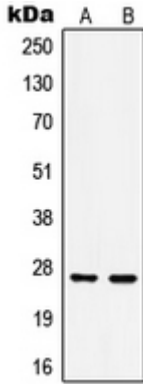
SwissProt: P04792

Purification: The antibody was purified by immunogen affinity chromatography.

Buffer: Liquid in 0.42% Potassium phosphate, 0.87% Sodium chloride, pH 7.3, 30% glycerol, and 0.01% sodium azide.

WB description:

Western blot analysis of HSP27 (pS15) expression in HeLa Anisomycin-treated (A), MCF7 (B) whole cell lysates.



IHC description:

Immunohistochemical analysis of HSP27 (pS15) staining in human breast cancer formalin fixed paraffin embedded tissue section. The section was pre-treated using heat mediated antigen retrieval with sodium citrate buffer (pH 6.0). The section was then incubated with the antibody at room temperature and detected using an HRP conjugated compact polymer system. DAB was used as the chromogen. The section was then counterstained with haematoxylin and mounted with DPX.

IP description:

Storage:

Store at -20°C. Avoid repeated freeze / thaw cycles.