

**Manufacturer/Supplier:**

WUXI DONGLIN SCI&TECH DEVELOPMENT CO., LTD

**Address:** A1-203 Mingpin CityII, No.8 Xihudong Road, Liangxi District  
Wuxi Jiangsu Province, China

TELE: 86-510-82732223

FAX: 86-510-82720101-8014

**Web :** [www.dldevelop.com](http://www.dldevelop.com)

Email: [info@dldevelop.com.cn](mailto:info@dldevelop.com.cn) [service@dldevelop.com.cn](mailto:service@dldevelop.com.cn)

**Product name:** Rabbit anti-ERAS Antibody

**Catalog:** DL90550A

**Synonyms:** HRAS2; HRASP; GTPase ERas; E-Ras; Embryonic stem cell-expressed Ras

**Immunogen:** KLH-conjugated synthetic peptide encompassing a sequence within the C-term region of human ERAS. The exact sequence is proprietary.

**Form:** Liquid

**Concentration:** 1mg/mL

**Size:** 100 ul/50 ul

**Host:** Rabbit

**Reactivity:** Human, Mouse, Rat

**Application:** WB, IF/IC

**Clonality:** Polyclonal

**Dilution:** WB (1/500 - 1/1000),

IF/IC (1/100 - 1/500)

**Entrez Gene:** 3266/353283

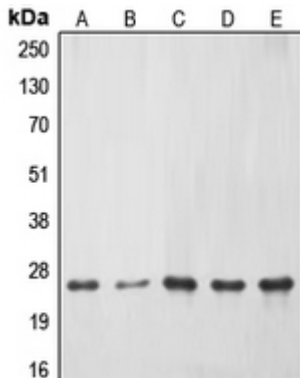
**SwissProt:** Q7Z444/Q7TN89

**Purification:** The antibody was purified by immunogen affinity chromatography.

**Buffer:** Liquid in 0.42% Potassium phosphate, 0.87% Sodium chloride, pH 7.3, 30% glycerol, and 0.01% sodium azide.

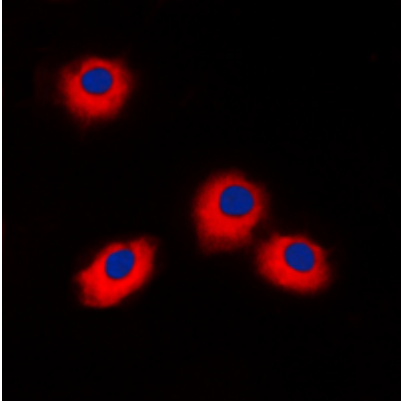
### WB description:

Western blot analysis of ERAS expression in HeLa (A), Jurkat (B), mouse liver (C), PC12 (D), rat kidney (E) whole cell lysates.



### IF/ICC description:

Immunofluorescent analysis of ERAS staining in Jurkat cells. Formalin-fixed cells were permeabilized with 0.1% Triton X-100 in TBS for 5-10 minutes and blocked with 3% BSA-PBS for 30 minutes at room temperature. Cells were probed with the primary antibody



**Storage:**

Store at -20°C. Avoid repeated freeze / thaw cycles.