

Manufacturer/Supplier:

WUXI DONGLIN SCI&TECH DEVELOPMENT CO., LTD

Address: A1-203 Mingpin CityII, No.8 Xihudong Road, Liangxi District
Wuxi Jiangsu Province, China

TELE: 86-510-82732223

FAX: 86-510-82720101-8014

Web : www.dldevelop.com

Email: info@dldevelop.com.cn service@dldevelop.com.cn

Product name: Rabbit anti-HOXA11/D11 Antibody

Catalog: DL90540A

Synonyms: HOXA11; HOX11; Homeobox protein Hox-A11;
Homeobox protein Hox-11; HOXD11; HOX4F;
Homeobox protein Hox-D11; Homeobox protein
Hox-4F

Immunogen: KLH-conjugated synthetic peptide encompassing a
sequence within the C-term region of human
HOXA11/D11. The exact sequence is proprietary.

Form: Liquid

Concentration: 1mg/mL

Size: 100 ul/50 ul

Host: Rabbit

Reactivity:

Application: WB, IHC, IF/IC

Human, Mouse, Chicken

Clonality: Polyclonal

Dilution: WB (1/500 - 1/1000),
IHC (1/100 - 1/200), IF/IC (1/100 -
1/500)

Entrez Gene: 15396; 15431

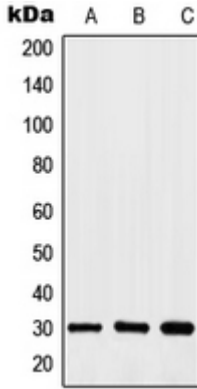
SwissProt: P31270; P31277/P31311; P23813

Purification: The antibody was purified by immunogen affinity chromatography.

Buffer: Liquid in 0.42% Potassium phosphate, 0.87% Sodium chloride, pH 7.3, 30% glycerol, and 0.01% sodium azide.

WB description:

Western blot analysis of HOXA11/D11 expression in HEK293T (A), HeLa (B), K562 (C) whole cell lysates.

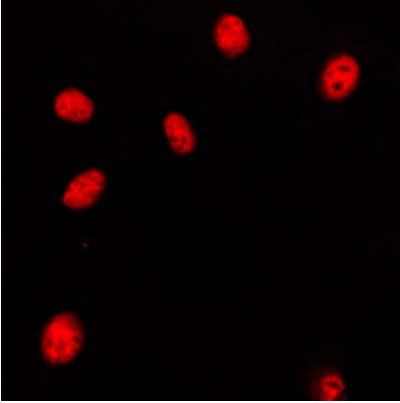


IHC description:

Immunohistochemical analysis of HOXA11/D11 staining in human brain formalin fixed paraffin embedded tissue section. The section was pre-treated using heat mediated antigen retrieval with sodium citrate buffer (pH 6.0). The section was then incubated with the antibody at room temperature and detected using an HRP conjugated compact polymer system. DAB was used as the chromogen. The section was then counterstained with haematoxylin and mounted with DPX.

IF/ICC description:

Immunofluorescent analysis of HOXA11/D11 staining in HeLa cells. Formalin-fixed cells were permeabilized with 0.1% Triton X-100 in TBS for 5-10 minutes and blocked with 3% BSA-PBS for 30 minutes at room temperature. Cells were probed with the primary anti



Storage:

Store at -20°C. Avoid repeated freeze / thaw cycles.