

Manufacturer/Supplier:

WUXI DONGLIN SCI&TECH DEVELOPMENT CO., LTD

Address: A1-203 Mingpin CityII, No.8 Xihudong Road, Liangxi District
Wuxi Jiangsu Province, China

TELE: 86-510-82732223

FAX: 86-510-82720101-8014

Web : www.dldevelop.com

Email: info@dldevelop.com.cn service@dldevelop.com.cn

Product name: Rabbit anti-GSK3 alpha (pS21) Antibody

Catalog: DL90511A

Synonyms: Glycogen synthase kinase-3 alpha; GSK-3 alpha;
Serine/threonine-protein kinase GSK3A

Immunogen: KLH-conjugated synthetic peptide encompassing a
sequence within the N-term region of human GSK3
alpha. The exact sequence is proprietary.

Form: Liquid

Concentration: 1mg/mL

Size: 100 ul/50 ul

Host: Rabbit

Reactivity: Human, Mouse, Rat

Application: WB, IHC, IF/IC, IP

Clonality: Polyclonal

Dilution: WB (1/500 - 1/1000),

IHC (1/100 - 1/200), IF/IC (1/100 - 1/500), IP (1/10 - 1/100)

Entrez Gene: 2931/606496/50686

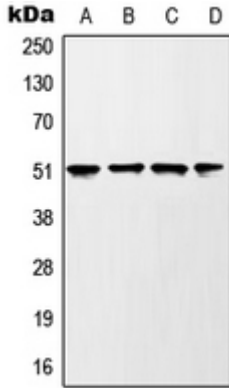
SwissProt: P49840/Q2NL51/P18265

Purification: The antibody was purified by immunogen affinity chromatography.

Buffer: Liquid in 0.42% Potassium phosphate, 0.87% Sodium chloride, pH 7.3, 30% glycerol, and 0.01% sodium azide.

WB description:

Western blot analysis of GSK3 alpha (pS21) expression in HEK293T UV-treated (A), mouse liver (B), rat liver (C), PC12 H2O2-treated (D) whole cell lysates.

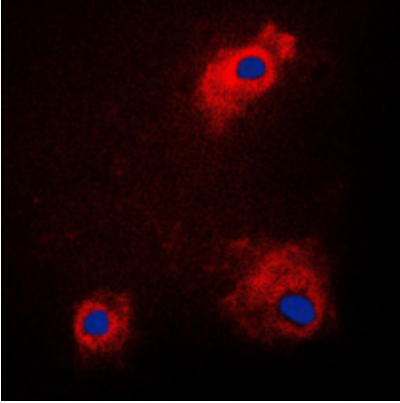


IHC description:

Immunohistochemical analysis of GSK3 alpha (pS21) staining in human breast cancer formalin fixed paraffin embedded tissue section. The section was pre-treated using heat mediated antigen retrieval with sodium citrate buffer (pH 6.0). The section was then incubated with the antibody at room temperature and detected using an HRP conjugated compact polymer system. DAB was used as the chromogen. The section was then counterstained with haematoxylin and mounted with DPX.

IF/ICC description:

Immunofluorescent analysis of GSK3 alpha (pS21) staining in PC12 cells. Formalin-fixed cells were permeabilized with 0.1% Triton X-100 in TBS for 5-10 minutes and blocked with 3% BSA-PBS for 30 minutes at room temperature. Cells were probed with the prima



IP description:

Storage:

Store at -20°C. Avoid repeated freeze / thaw cycles.