

**Manufacturer/Supplier:**

WUXI DONGLIN SCI&TECH DEVELOPMENT CO., LTD

**Address:** A1-203 Mingpin CityII, No.8 Xihudong Road. Liangxi District  
Wuxi Jiangsu Province, China

TELE: 86-510-82732223

FAX: 86-510-82720101-8014

**Web :** [www.dldevelop.com](http://www.dldevelop.com)

Email: [info@dldevelop.com.cn](mailto:info@dldevelop.com.cn) [service@dldevelop.com.cn](mailto:service@dldevelop.com.cn)

**Product name:** Rabbit anti-GLUR4 (pS862) Antibody

**Catalog:** DL90502A

**Synonyms:** GLUR4; Glutamate receptor 4; GluR-4; GluR4;  
AMPA-selective glutamate receptor 4; GluR-D;  
Glutamate receptor ionotropic, AMPA 4; GluA4

**Immunogen:** KLH-conjugated synthetic peptide encompassing a  
sequence within the C-term region of human  
GLUR4. The exact sequence is proprietary.

**Form:** Liquid

**Concentration:** 1mg/mL

**Size:** 100 ul/50 ul

**Host:** Rabbit

**Reactivity:**

**Application:** WB

Human, Mouse, Rat, Chicken, Monk

ey,Zebrafish

**Clonality:** Polyclonal

**Dilution:** WB (1/500 - 1/1000)

**Entrez Gene:** 2893/14802/29629

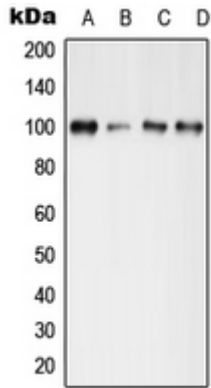
**SwissProt:** P48058/Q9Z2W8/P19493

**Purification:** The antibody was purified by immunogen affinity chromatography.

**Buffer:** Liquid in 0.42% Potassium phosphate, 0.87% Sodium chloride, pH 7.3, 30% glycerol, and 0.01% sodium azide.

**WB description:**

Western blot analysis of GLUR4 (pS862) expression in MCF7 Forskonlin-treated (A), mouse brain (B), mouse spleen (C), rat spleen (D) whole cell lysates.



**Storage:**

Store at -20°C. Avoid repeated freeze / thaw cycles.