

Manufacturer/Supplier:

WUXI DONGLIN SCI&TECH DEVELOPMENT CO., LTD

Address: A1-203 Mingpin CityII, No.8 Xihudong Road, Liangxi District
Wuxi Jiangsu Province, China

TELE: 86-510-82732223

FAX: 86-510-82720101-8014

Web : www.dldevelop.com

Email: info@dldevelop.com.cn service@dldevelop.com.cn

Product name: Rabbit anti-GLUR1 (pS849) Antibody

Catalog: DL90500A

Synonyms: GLUH1; GLUR1; Glutamate receptor 1; GluR-1;
AMPA-selective glutamate receptor 1; GluR-A;
GluR-K1; Glutamate receptor ionotropic, AMPA 1;
GluA1

Immunogen: KLH-conjugated synthetic peptide encompassing a
sequence within the C-term region of human
GLUR1. The exact sequence is proprietary.

Form: Liquid

Concentration: 1mg/mL

Size: 100 ul/50 ul

Host: Rabbit

Reactivity:

Application: WB

Human, Mouse, Rat, Bovine, Chicken, Monkey

Clonality: Polyclonal

Dilution: WB (1/500 - 1/1000)

Entrez Gene: 2890/14799/50592

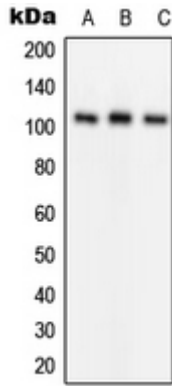
SwissProt: P42261/P23818/P19490

Purification: The antibody was purified by immunogen affinity chromatography.

Buffer: Liquid in 0.42% Potassium phosphate, 0.87% Sodium chloride, pH 7.3, 30% glycerol, and 0.01% sodium azide.

WB description:

Western blot analysis of GLUR1 (pS849) expression in Jurkat (A), mouse kidney (B), rat liver (C) whole cell lysates.



Storage:

Store at -20°C. Avoid repeated freeze / thaw cycles.