

Manufacturer/Supplier:

WUXI DONGLIN SCI&TECH DEVELOPMENT CO., LTD

Address: A1-203 Mingpin CityII, No.8 Xihudong Road. Liangxi District
Wuxi Jiangsu Province, China

TELE: 86-510-82732223

FAX: 86-510-82720101-8014

Web : www.dldevelop.com

Email: info@dldevelop.com.cn service@dldevelop.com.cn

Product name: Rabbit anti-GRB10 (pY67) Antibody

Catalog: DL90498A

Synonyms: GRBIR; KIAA0207; Growth factor receptor-bound protein 10; GRB10 adapter protein; Insulin receptor-binding protein Grb-IR

Immunogen: KLH-conjugated synthetic peptide encompassing a sequence within the N-term region of human GRB10. The exact sequence is proprietary.

Form: Liquid

Concentration: 1mg/mL

Size: 100 ul/50 ul

Host: Rabbit

Reactivity: Human, Mouse, Rat

Application: WB, IF/IC

Clonality: Polyclonal

Dilution: WB (1/500 - 1/1000),
IF/IC (1/100 - 1/500)

Entrez Gene: 2887/14783/498416

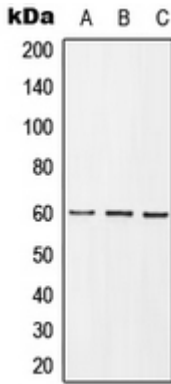
SwissProt: Q13322/Q60760/P0CE43

Purification: The antibody was purified by immunogen affinity chromatography.

Buffer: Liquid in 0.42% Potassium phosphate, 0.87% Sodium chloride, pH 7.3, 30% glycerol, and 0.01% sodium azide.

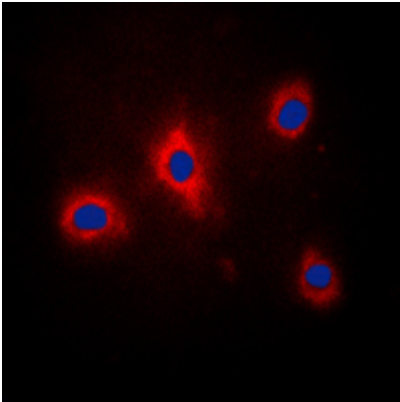
WB description:

Western blot analysis of GRB10 (pY67) expression in HEK293T insulin-treated (A), mouse spleen (B), PC12 insulin-treated (C) whole cell lysates.



IF/ICC description:

Immunofluorescent analysis of GRB10 (pY67) staining in PC12 cells. Formalin-fixed cells were permeabilized with 0.1% Triton X-100 in TBS for 5-10 minutes and blocked with 3% BSA-PBS for 30 minutes at room temperature. Cells were probed with the primary an



Storage:



Store at -20°C. Avoid repeated freeze / thaw cycles.