

Manufacturer/Supplier:

WUXI DONGLIN SCI&TECH DEVELOPMENT CO., LTD

Address: A1-203 Mingpin CityII, No.8 Xihudong Road. Liangxi District
Wuxi Jiangsu Province, China

TELE: 86-510-82732223

FAX: 86-510-82720101-8014

Web : www.dldevelop.com

Email: info@dldevelop.com.cn service@dldevelop.com.cn

Product name: Rabbit anti-GAPDH Antibody

Catalog: DL90460A

Synonyms: GAPD; Glyceraldehyde-3-phosphate dehydrogenase; GAPDH; Peptidyl-cysteine S-nitrosylase GAPDH

Immunogen: KLH-conjugated synthetic peptide encompassing a sequence within the N-term region of human GAPDH. The exact sequence is proprietary.

Form: Liquid

Concentration: 1mg/mL

Size: 100 ul/50 ul

Host: Rabbit

Reactivity: Human, Mouse, Rat, Bovine, Chick

Application: WB

n,Dog,Monkey,Pig,Rabbit

Clonality: Polyclonal

Dilution: WB (1/500 - 1/1000)

Entrez Gene: 2597/100042025; 14433/24383

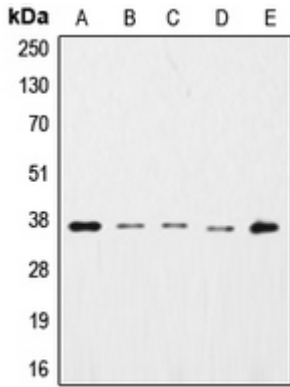
SwissProt: P04406/P16858/P04797

Purification: The antibody was purified by immunogen affinity chromatography.

Buffer: Liquid in 0.42% Potassium phosphate, 0.87% Sodium chloride, pH 7.3, 30% glycerol, and 0.01% sodium azide.

WB description:

Western blot analysis of GAPDH expression in HepG2 (A), K562 (B), NIH3T3 (C), Raw264.7 (D), PC12 (E) whole cell lysates.



Storage:

Store at -20°C. Avoid repeated freeze / thaw cycles.