

Manufacturer/Supplier:

WUXI DONGLIN SCI&TECH DEVELOPMENT CO., LTD

Address: A1-203 Mingpin CityII, No.8 Xihudong Road, Liangxi District
Wuxi Jiangsu Province, China

TELE: 86-510-82732223

FAX: 86-510-82720101-8014

Web : www.dldevelop.com

Email: info@dldevelop.com.cn service@dldevelop.com.cn

Product name: Rabbit anti-GABBR1 Antibody

Catalog: DL90453A

Synonyms: GPRC3A; Gamma-aminobutyric acid type B receptor subunit 1; GABA-B receptor 1; GABA-B-R1; GABA-BR1; GABABR1; Gb1

Immunogen: KLH-conjugated synthetic peptide encompassing a sequence within the C-term region of human GABBR1. The exact sequence is proprietary.

Form: Liquid

Concentration: 1mg/mL

Size: 100 ul/50 ul

Host: Rabbit

Reactivity:
Human, Mouse, Rat, Bovine, Pig

Application: WB

Clonality: Polyclonal

Dilution: WB (1/500 - 1/1000)

Entrez Gene: 2550/54393/81657

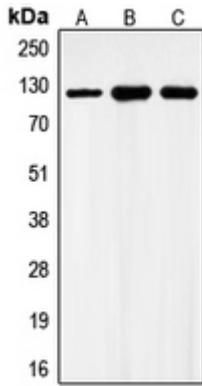
SwissProt: Q9UBS5/Q9WV18/Q9Z0U4

Purification: The antibody was purified by immunogen affinity chromatography.

Buffer: Liquid in 0.42% Potassium phosphate, 0.87% Sodium chloride, pH 7.3, 30% glycerol, and 0.01% sodium azide.

WB description:

Western blot analysis of GABBR1 expression in HEK293T (A), mouse heart (B), rat heart (C) whole cell lysates.



Storage:

Store at -20°C. Avoid repeated freeze / thaw cycles.