

**Manufacturer/Supplier:**

WUXI DONGLIN SCI&TECH DEVELOPMENT CO., LTD

**Address:** A1-203 Mingpin CityII, No.8 Xihudong Road, Liangxi District  
Wuxi Jiangsu Province, China

TELE: 86-510-82732223

FAX: 86-510-82720101-8014

**Web :** [www.dldevelop.com](http://www.dldevelop.com)

Email: [info@dldevelop.com.cn](mailto:info@dldevelop.com.cn)    [service@dldevelop.com.cn](mailto:service@dldevelop.com.cn)

**Product name:** Rabbit anti-GAB1 (pY659) Antibody

**Catalog:** DL90452A

**Synonyms:** GRB2-associated-binding protein 1 ;  
GRB2-associated binder 1; Growth factor receptor  
bound protein 2-associated protein 1

**Immunogen:** KLH-conjugated synthetic peptide encompassing a  
sequence within the C-term region of human GAB1.  
The exact sequence is proprietary.

**Form:** Liquid

**Concentration:** 1mg/mL

**Size:** 100 ul/50 ul

**Host:** Rabbit

**Reactivity:**  
Human, Mouse, Rat, Bovine, Monke

**Application:** WB

y

**Clonality:** Polyclonal

**Dilution:** WB (1/500 - 1/1000)

**Entrez Gene:** 2549/14388

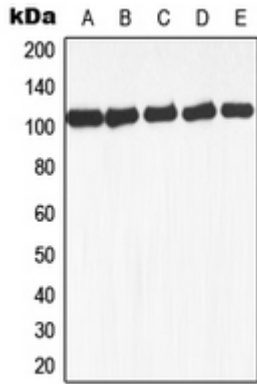
**SwissProt:** Q13480/Q9QYY0

**Purification:** The antibody was purified by immunogen affinity chromatography.

**Buffer:** Liquid in 0.42% Potassium phosphate, 0.87% Sodium chloride, pH 7.3, 30% glycerol, and 0.01% sodium azide.

**WB description:**

Western blot analysis of GAB1 (pY659) expression in HeLa insulin-treated (A), NIH3T3 (B), C6 (C), Raw264.7 insulin-treated (D), H9C2 insulin-treated (E) whole cell lysates.



**Storage:**

Store at -20°C. Avoid repeated freeze / thaw cycles.