

Manufacturer/Supplier:

WUXI DONGLIN SCI&TECH DEVELOPMENT CO., LTD

Address: A1-203 Mingpin CityII, No.8 Xihudong Road, Liangxi District
Wuxi Jiangsu Province, China

TELE: 86-510-82732223

FAX: 86-510-82720101-8014

Web : www.dldevelop.com

Email: info@dldevelop.com.cn service@dldevelop.com.cn

Product name: Rabbit anti-FOXO1 Antibody

Catalog: DL90431A

Synonyms: FKHR; FOXO1A; Forkhead box protein O1;
Forkhead box protein O1A; Forkhead in
rhabdomyosarcoma

Immunogen: KLH-conjugated synthetic peptide encompassing a
sequence within the center region of human
FOXO1. The exact sequence is proprietary.

Form: Liquid

Concentration: 1mg/mL

Size: 100 ul/50 ul

Host: Rabbit

Reactivity:
Human, Bovine, Monkey, Pig

Application: WB, IHC, IF/IC,
ChIP

Clonality: Polyclonal

Dilution: WB (1/500 - 1/1000),
IHC (1/100 - 1/200), IF/IC (1/100 -
1/500), ChIP (Use at an assay
dependent concentration)

Entrez Gene: 2308

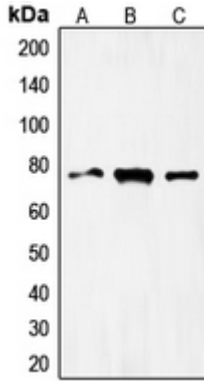
SwissProt: Q12778

Purification: The antibody was purified by immunogen affinity chromatography.

Buffer: Liquid in 0.42% Potassium phosphate, 0.87% Sodium chloride, pH 7.3, 30% glycerol, and 0.01% sodium azide.

WB description:

Western blot analysis of FOXO1 expression in HeLa (A), MCF7 (B), Jurkat (C) whole cell lysates.

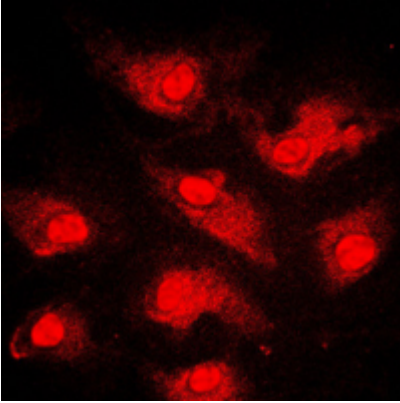


IHC description:

Immunohistochemical analysis of FOXO1 staining in human breast cancer formalin fixed paraffin embedded tissue section. The section was pre-treated using heat mediated antigen retrieval with sodium citrate buffer (pH 6.0). The section was then incubated with the antibody at room temperature and detected using an HRP conjugated compact polymer system. DAB was used as the chromogen. The section was then counterstained with haematoxylin and mounted with DPX.

IF/ICC description:

Immunofluorescent analysis of FOXO1 staining in MCF7 cells. Formalin-fixed cells were permeabilized with 0.1% Triton X-100 in TBS for 5-10 minutes and blocked with 3% BSA-PBS for 30 minutes at room temperature. Cells were probed with the primary antibody



ChIP description:

Storage:

Store at -20°C. Avoid repeated freeze / thaw cycles.