

Manufacturer/Supplier:

WUXI DONGLIN SCI&TECH DEVELOPMENT CO., LTD

Address: A1-203 Mingpin CityII, No.8 Xihudong Road, Liangxi District
Wuxi Jiangsu Province, China

TELE: 86-510-82732223

FAX: 86-510-82720101-8014

Web : www.dldevelop.com

Email: info@dldevelop.com.cn service@dldevelop.com.cn

Product name: Rabbit anti-ENT1 Antibody

Catalog: DL90388A

Synonyms: ENT1; Equilibrative nucleoside transporter 1;
Equilibrative nitrobenzylmercaptapurine
riboside-sensitive nucleoside transporter;
Equilibrative NBMPR-sensitive nucleoside
transporter; Nucleoside transporter, es-type; Solute
carrier family 29 member 1

Immunogen: KLH-conjugated synthetic peptide encompassing a
sequence within the N-term region of human ENT1.
The exact sequence is proprietary.

Form: Liquid

Concentration: 1mg/mL

Size: 100 ul/50 ul

Host: Rabbit

Reactivity:

Human, Mouse, Rat, Bovine, Dog, Monkey

Application: WB**Clonality:** Polyclonal**Dilution:** WB (1/500 - 1/1000)**Entrez Gene:**

2030/63959/63997

SwissProt:

Q99808/Q9JIM1/O54698

Purification:

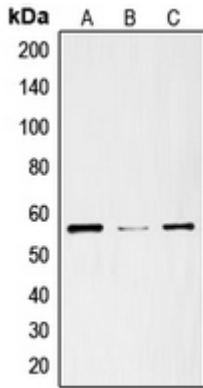
The antibody was purified by immunogen affinity chromatography.

Buffer:

Liquid in 0.42% Potassium phosphate, 0.87% Sodium chloride, pH 7.3, 30% glycerol, and 0.01% sodium azide.

WB description:

Western blot analysis of ENT1 expression in SKNSH (A), mouse heart (B), rat heart (C) whole cell lysates.



Storage:

Store at -20°C. Avoid repeated freeze / thaw cycles.