

Manufacturer/Supplier:

WUXI DONGLIN SCI&TECH DEVELOPMENT CO., LTD

Address: A1-203 Mingpin CityII, No.8 Xihudong Road, Liangxi District
Wuxi Jiangsu Province, China

TELE: 86-510-82732223

FAX: 86-510-82720101-8014

Web : www.dldevelop.com

Email: info@dldevelop.com.cn service@dldevelop.com.cn

Product name: Rabbit anti-Cytochrome P450 2A6 Antibody

Catalog: DL90312A

Synonyms: CYP2A6; CYP2A3; Cytochrome P450 2A6;
1,4-cineole 2-exo-monooxygenase; CYP11A6;
Coumarin 7-hydroxylase; Cytochrome P450 IIA3;
Cytochrome P450(I); CYP2A7; Cytochrome P450
2A7; CYP11A7; Cytochrome P450 IIA4; CYP2A13;
Cytochrome P450 2A13; CYP11A13

Immunogen: KLH-conjugated synthetic peptide encompassing a
sequence within the center region of human
Cytochrome P450 2A6. The exact sequence is
proprietary.

Form: Liquid

Concentration: 1mg/mL

Size: 100 ul/50 ul

Host: Rabbit

Reactivity: Human,Monkey

Application: WB

Clonality: Polyclonal

Dilution: WB (1/500 - 1/1000)

Entrez Gene: 1553

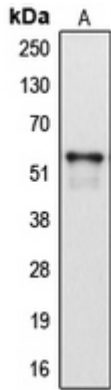
SwissProt: P11509; P20853; Q16696

Purification: The antibody was purified by immunogen affinity chromatography.

Buffer: Liquid in 0.42% Potassium phosphate, 0.87% Sodium chloride, pH 7.3, 30% glycerol, and 0.01% sodium azide.

WB description:

Western blot analysis of Cytochrome P450 2A6 expression in HepG2 (A) whole cell lysates.



Storage:

Store at -20°C. Avoid repeated freeze / thaw cycles.