

Manufacturer/Supplier:

WUXI DONGLIN SCI&TECH DEVELOPMENT CO., LTD

Address: A1-203 Mingpin CityII, No.8 Xihudong Road, Liangxi District
Wuxi Jiangsu Province, China

TELE: 86-510-82732223

FAX: 86-510-82720101-8014

Web : www.dldevelop.com

Email: info@dldevelop.com.cn service@dldevelop.com.cn

Product name: Rabbit anti-Cytochrome P450 1A1/2 Antibody

Catalog: DL90307A

Synonyms: CYP1A1; Cytochrome P450 1A1; CYPIA1;
Cytochrome P450 form 6; Cytochrome P450-C;
Cytochrome P450-P1; CYP1A2; Cytochrome P450
1A2; CYPIA2; Cytochrome P(3)450; Cytochrome
P450 4; Cytochrome P450-P3

Immunogen: KLH-conjugated synthetic peptide encompassing a
sequence within the center region of human
Cytochrome P450 1A1/2. The exact sequence is
proprietary.

Form: Liquid

Concentration: 1mg/mL

Size: 100 ul/50 ul

Host: Rabbit

Reactivity:
Human, Mouse, Rat, Dog, Monkey,
Sheep

Application: WB, IHC, IF/IC, IP

Clonality: Polyclonal

Dilution: WB (1/500 - 1/1000),
IHC (1/100 - 1/200), IF/IC (1/100 -
1/500), IP (1/10 - 1/100)

Entrez Gene: 1749/13395/25431

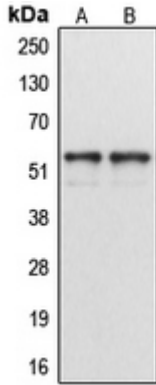
SwissProt: P56178/P70396/P50575

Purification: The antibody was purified by immunogen affinity chromatography.

Buffer: Liquid in 0.42% Potassium phosphate, 0.87% Sodium chloride, pH 7.3, 30% glycerol, and 0.01% sodium azide.

WB description:

Western blot analysis of DLX5 expression in HeLa (A), Raw264.7 (B), PC12 (C) whole cell lysates.

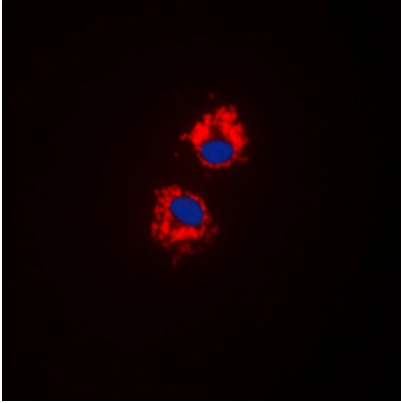


IHC description:

Immunohistochemical analysis of DLX5 staining in human lung cancer formalin fixed paraffin embedded tissue section. The section was pre-treated using heat mediated antigen retrieval with sodium citrate buffer (pH 6.0). The section was then incubated with the antibody at room temperature and detected using an HRP conjugated compact polymer system. DAB was used as the chromogen. The section was then counterstained with haematoxylin and mounted with DPX.

IF/ICC description:

Immunofluorescent analysis of DLX5 staining in Raw264.7 cells. Formalin-fixed cells were permeabilized with 0.1% Triton X-100 in TBS for 5-10 minutes and blocked with 3% BSA-PBS for 30 minutes at room temperature. Cells were probed with the primary antibo



IP description:

Storage:

Store at -20°C. Avoid repeated freeze / thaw cycles.