

Manufacturer/Supplier:

WUXI DONGLIN SCI&TECH DEVELOPMENT CO., LTD

Address: A1-203 Mingpin CityII, No.8 Xihudong Road, Liangxi District
Wuxi Jiangsu Province, China

TELE: 86-510-82732223

FAX: 86-510-82720101-8014

Web : www.dldevelop.com

Email: info@dldevelop.com.cn service@dldevelop.com.cn

Product name: Rabbit anti-gp91 phox Antibody

Catalog: DL90306A

Synonyms: NOX2; Cytochrome b-245 heavy chain;
CGD91-phox; Cytochrome b(558) subunit beta;
Cytochrome b558 subunit beta; Heme-binding
membrane glycoprotein gp91phox; NADPH oxidase
2; Neutrophil cytochrome b 91 kDa polypeptide;
Superoxide-generating NADPH oxidase hea

Immunogen: KLH-conjugated synthetic peptide encompassing a
sequence within the C-term region of human gp91
phox. The exact sequence is proprietary.

Form: Liquid

Concentration: 1mg/mL

Size: 100 ul/50 ul

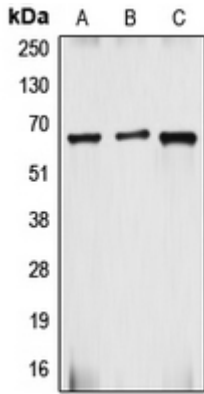
Host: Rabbit

Reactivity:

Human, Mouse, Rat, Pig, Rabbit, Sheep

Application: WB**Clonality:** Polyclonal**Dilution:** WB (1/500 - 1/1000)**Entrez Gene:** 1536/13058**SwissProt:** P04839/Q61093**Purification:** The antibody was purified by immunogen affinity chromatography.**Buffer:** Liquid in 0.42% Potassium phosphate, 0.87% Sodium chloride, pH 7.3, 30% glycerol, and 0.01% sodium azide.**WB description:**

Western blot analysis of gp91 phox expression in HepG2 (A), Caco2 (B), MCF7 (C) whole cell lysates.



Storage:

Store at -20°C. Avoid repeated freeze / thaw cycles.