

Manufacturer/Supplier:

WUXI DONGLIN SCI&TECH DEVELOPMENT CO., LTD

Address: A1-203 Mingpin CityII, No.8 Xihudong Road, Liangxi District
Wuxi Jiangsu Province, China

TELE: 86-510-82732223

FAX: 86-510-82720101-8014

Web : www.dldevelop.com

Email: info@dldevelop.com.cn service@dldevelop.com.cn

Product name: Rabbit anti-CK2 beta (pS209) Antibody

Catalog: DL90285A

Synonyms: CK2N; G5A; Casein kinase II subunit beta; CK II beta; Phosvitin; Protein G5a

Immunogen: KLH-conjugated synthetic peptide encompassing a sequence within the C-term region of human CK2 beta. The exact sequence is proprietary.

Form: Liquid

Concentration: 1mg/mL

Size: 100 ul/50 ul

Host: Rabbit

Reactivity:

Human, Mouse, Rat, Bovine, Chicken, Pig, Rabbit, Sheep

Application: WB

Clonality: Polyclonal

Dilution: WB (1/500 - 1/1000)

Entrez Gene: 1460/13001/81650

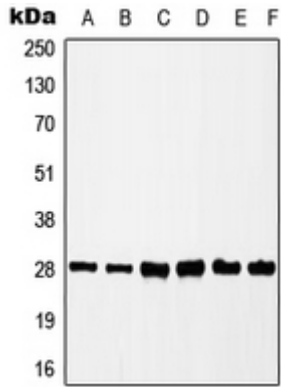
SwissProt: P67870/P67871/P67874

Purification: The antibody was purified by immunogen affinity chromatography.

Buffer: Liquid in 0.42% Potassium phosphate, 0.87% Sodium chloride, pH 7.3, 30% glycerol, and 0.01% sodium azide.

WB description:

Western blot analysis of CK2 beta (pS209) expression in HEK293T (A), MCF7 (B), HepG2 (C), K562 (D), mouse liver (E), rat spleen (F) whole cell lysates.



Storage:

Store at -20°C. Avoid repeated freeze / thaw cycles.