

Manufacturer/Supplier:

WUXI DONGLIN SCI&TECH DEVELOPMENT CO., LTD

Address: A1-203 Mingpin CityII, No.8 Xihudong Road, Liangxi District
Wuxi Jiangsu Province, China

TELE: 86-510-82732223

FAX: 86-510-82720101-8014

Web : www.dldevelop.com

Email: info@dldevelop.com.cn service@dldevelop.com.cn

Product name: Rabbit anti-Alpha-crystallin B (pS19) Antibody

Catalog: DL90276A

Synonyms:

CRYA2; Alpha-crystallin B chain;

Alpha(B)-crystallin; Heat shock protein beta-5;

HspB5; Renal carcinoma antigen NY-REN-27;

Rosenthal fiber component

Immunogen:

KLH-conjugated synthetic peptide encompassing a sequence within the N-term region of human Alpha-crystallin B. The exact sequence is proprietary.

Form: Liquid

Concentration: 1mg/mL

Size: 100 ul/50 ul

Host: Rabbit

Reactivity:

Human, Mouse, Rat, Bovine, Monkey, Pig, Sheep

Application: WB**Clonality:** Polyclonal**Dilution:** WB (1/500 - 1/1000)**Entrez Gene:**

1410/12955/25420

SwissProt:

P02511/P23927/P23928

Purification:

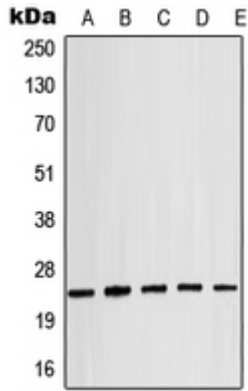
The antibody was purified by immunogen affinity chromatography.

Buffer:

Liquid in 0.42% Potassium phosphate, 0.87% Sodium chloride, pH 7.3, 30% glycerol, and 0.01% sodium azide.

WB description:

Western blot analysis of Alpha-crystallin B (pS19) expression in MCF7 (A), mouse spleen (B), mouse eye (C), rat liver (D), rat eye (E) whole cell lysates.



Storage:

Store at -20°C. Avoid repeated freeze / thaw cycles.