

Manufacturer/Supplier:

WUXI DONGLIN SCI&TECH DEVELOPMENT CO., LTD

Address: A1-203 Mingpin CityII, No.8 Xihudong Road, Liangxi District
Wuxi Jiangsu Province, China

TELE: 86-510-82732223

FAX: 86-510-82720101-8014

Web : www.dldevelop.com

Email: info@dldevelop.com.cn service@dldevelop.com.cn

Product name: Rabbit anti-p27 Kip1 (pT198) Antibody

Catalog: DL90208A

Synonyms: KIP1; Cyclin-dependent kinase inhibitor 1B;
Cyclin-dependent kinase inhibitor p27; p27Kip1

Immunogen: KLH-conjugated synthetic peptide encompassing a
sequence within the C-term region of human p27
Kip1. The exact sequence is proprietary.

Form: Liquid

Concentration: 1mg/mL

Size: 100 ul/50 ul

Host: Rabbit

Reactivity:

Human, Mouse, Rat, Bovine, Dog, Pig, Rabbit

Application: WB

Clonality: Polyclonal

Dilution: WB (1/500 - 1/1000)

Entrez Gene: 1027/12576

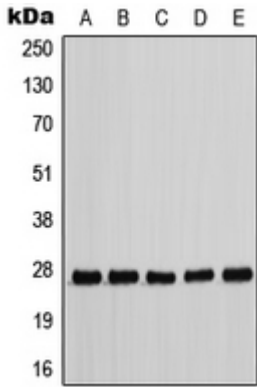
SwissProt: P46527/P46414

Purification: The antibody was purified by immunogen affinity chromatography.

Buffer: Liquid in 0.42% Potassium phosphate, 0.87% Sodium chloride, pH 7.3, 30% glycerol, and 0.01% sodium azide.

WB description:

Western blot analysis of p27 Kip1 (pT198) expression in HEK293T EGF-treated (A), MCF7 (B), NIH3T3 (C), Raw264.7 EGF-treated (D), H9C2 EGF-treated (E) whole cell lysates.



Storage:

Store at -20°C. Avoid repeated freeze / thaw cycles.