

Manufacturer/Supplier:

WUXI DONGLIN SCI&TECH DEVELOPMENT CO., LTD

Address: A1-203 Mingpin CityII, No.8 Xihudong Road, Liangxi District
Wuxi Jiangsu Province, China

TELE: 86-510-82732223

FAX: 86-510-82720101-8014

Web : www.dldevelop.com

Email: info@dldevelop.com.cn service@dldevelop.com.cn

Product name: Rabbit anti-p21 Antibody

Catalog: DL90207A

Synonyms: CAP20; CDKN1; CIP1; MDA6; PIC1; SDI1;
WAF1; Cyclin-dependent kinase inhibitor 1;
CDK-interacting protein 1; Melanoma
differentiation-associated protein 6; MDA-6; p21

Immunogen: KLH-conjugated synthetic peptide encompassing a
sequence within the C-term region of human p21.
The exact sequence is proprietary.

Form: Liquid

Concentration: 1mg/mL

Size: 100 ul/50 ul

Host: Rabbit

Reactivity:

Application: WB, IP

Human,Bovine,Dog,Sheep

Clonality: Polyclonal

Dilution: WB (1/500 - 1/1000), IP
(1/10 - 1/100)

Entrez Gene: 1026

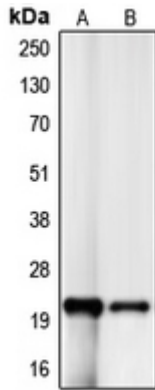
SwissProt: P38936

Purification: The antibody was purified by immunogen affinity chromatography.

Buffer: Liquid in 0.42% Potassium phosphate, 0.87% Sodium chloride, pH 7.3, 30% glycerol, and 0.01% sodium azide.

WB description:

Western blot analysis of p21 expression in HeLa (A), HT1080 (B) whole cell lysates.



IP description:

Storage:

Store at -20°C. Avoid repeated freeze / thaw cycles.