

**Manufacturer/Supplier:**

WUXI DONGLIN SCI&TECH DEVELOPMENT CO., LTD

**Address:** A1-203 Mingpin CityII, No.8 Xihudong Road, Liangxi District  
Wuxi Jiangsu Province, China

TELE: 86-510-82732223

FAX: 86-510-82720101-8014

**Web :** [www.dldevelop.com](http://www.dldevelop.com)

Email: [info@dldevelop.com.cn](mailto:info@dldevelop.com.cn)    [service@dldevelop.com.cn](mailto:service@dldevelop.com.cn)

**Product name:** Rabbit anti-CDC2 Antibody

**Catalog:** DL90190A

**Synonyms:** CDC2; CDC28A; CDKN1; P34CDC2;  
Cyclin-dependent kinase 1; CDK1; Cell division  
control protein 2 homolog; Cell division protein  
kinase 1; p34 protein kinase

**Immunogen:** KLH-conjugated synthetic peptide encompassing a  
sequence within the center region of human CDC2.  
The exact sequence is proprietary.

**Form:** Liquid

**Concentration:** 1mg/mL

**Size:** 100 ul/50 ul

**Host:** Rabbit

**Reactivity:**

**Application:** WB, IHC, IF/IC, IP

Human, Mouse, Rat, Bovine, Dog, Monkey, Pig

**Clonality:** Polyclonal

**Dilution:** WB (1/500 - 1/1000), IHC (1/100 - 1/200), IF/IC (1/100 - 1/500), IP (1/10 - 1/100), FC (1/100 - 1/200)

**Entrez Gene:** 83502; 83501

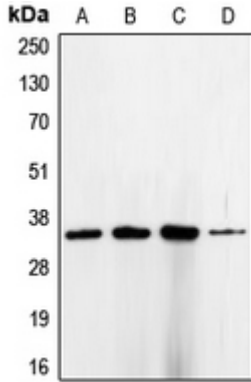
**SwissProt:** P12830; P19022; P22223; P55283/Q9R0T4; Q9Z1Y3; Q63149

**Purification:** The antibody was purified by immunogen affinity chromatography.

**Buffer:** Liquid in 0.42% Potassium phosphate, 0.87% Sodium chloride, pH 7.3, 30% glycerol, and 0.01% sodium azide.

**WB description:**

Western blot analysis of E Cadherin expression in HEK293T (A), PC12 (B), A431 (C), MCF7 (D), C2C12 (E) whole cell lysates.

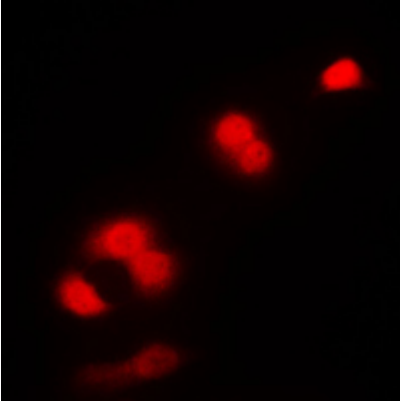


### IHC description:

Immunohistochemical analysis of E Cadherin staining in human breast cancer formalin fixed paraffin embedded tissue section. The section was pre-treated using heat mediated antigen retrieval with sodium citrate buffer (pH 6.0). The section was then incubated with the antibody at room temperature and detected using an HRP conjugated compact polymer system. DAB was used as the chromogen. The section was then counterstained with haematoxylin and mounted with DPX.

### IF/ICC description:

Immunofluorescent analysis of E Cadherin staining in PC12 cells. Formalin-fixed cells were permeabilized with 0.1% Triton X-100 in TBS for 5-10 minutes and blocked with 3% BSA-PBS for 30 minutes at room temperature. Cells were probed with the primary anti



**IP description:**

Immunoprecipitation of E Cadherin from 0.5mg HEK293F whole cell extract lysate, using 5ug of anti-E Cadherin Antibody and 50ul of protein G magnetic beads (+). No antibody was added to the control (-). The antibody was incubated under agitation with Prot

**Storage:**

Store at -20°C. Avoid repeated freeze / thaw cycles.