

Manufacturer/Supplier:

WUXI DONGLIN SCI&TECH DEVELOPMENT CO., LTD

Address: A1-203 Mingpin CityII, No.8 Xihudong Road, Liangxi District
Wuxi Jiangsu Province, China

TELE: 86-510-82732223

FAX: 86-510-82720101-8014

Web : www.dldevelop.com

Email: info@dldevelop.com.cn service@dldevelop.com.cn

Product name: Rabbit anti-CD3e Antibody

Catalog: DL90178A

Synonyms: T3E; T-cell surface glycoprotein CD3 epsilon chain;
T-cell surface antigen T3/Leu-4 epsilon chain;
CD3e

Immunogen: KLH-conjugated synthetic peptide encompassing a
sequence within the center region of human CD3e.
The exact sequence is proprietary.

Form: Liquid

Concentration: 1mg/mL

Size: 100 ul/50 ul

Host: Rabbit

Reactivity: Human

Application: WB

Clonality: Polyclonal

Dilution: WB (1/500 - 1/1000)

Entrez Gene: 916

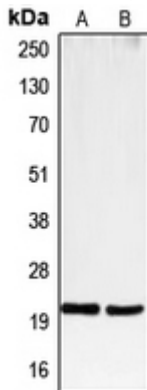
SwissProt: P07766

Purification: The antibody was purified by immunogen affinity chromatography.

Buffer: Liquid in 0.42% Potassium phosphate, 0.87% Sodium chloride, pH 7.3, 30% glycerol, and 0.01% sodium azide.

WB description:

Western blot analysis of CD3e expression in Jurkat (A), CCRFCEM (B) whole cell lysates.



Storage:

Store at -20°C. Avoid repeated freeze / thaw cycles.