

Manufacturer/Supplier:

WUXI DONGLIN SCI&TECH DEVELOPMENT CO., LTD

Address: A1-203 Mingpin CityII, No.8 Xihudong Road, Liangxi District
Wuxi Jiangsu Province, China

TELE: 86-510-82732223

FAX: 86-510-82720101-8014

Web : www.dldevelop.com

Email: info@dldevelop.com.cn service@dldevelop.com.cn

Product name: Rabbit anti-Calcium Sensing Receptor (pT888)
Antibody

Catalog: DL90159A

Synonyms: GPRC2A; PCAR1; Extracellular calcium-sensing receptor; CaSR; Parathyroid cell calcium-sensing receptor 1; PCaR1

Immunogen: KLH-conjugated synthetic peptide encompassing a sequence within the C-term region of human Calcium Sensing Receptor. The exact sequence is proprietary.

Form: Liquid

Concentration: 1mg/mL

Size: 100 ul/50 ul

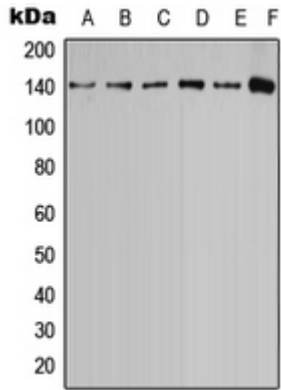
Host: Rabbit

Reactivity:

Human, Mouse, Rat, Bovine, Monkey, Pig

Application: WB**Clonality:** Polyclonal**Dilution:** WB (1/500 - 1/1000)**Entrez Gene:** 846/12374/24247**SwissProt:** P41180/Q9QY96/P48442**Purification:** The antibody was purified by immunogen affinity chromatography.**Buffer:** Liquid in 0.42% Potassium phosphate, 0.87% Sodium chloride, pH 7.3, 30% glycerol, and 0.01% sodium azide.**WB description:**

Western blot analysis of Calcium Sensing Receptor (pT888) expression in MCF7 (A), MDCK (B), U2OS (C), SP2/0 (D), PC12 (E), rat brain (F) whole cell lysates.



Storage:

Store at -20°C. Avoid repeated freeze / thaw cycles.