

Manufacturer/Supplier:

WUXI DONGLIN SCI&TECH DEVELOPMENT CO., LTD

Address: A1-203 Mingpin CityII, No.8 Xihudong Road, Liangxi District
Wuxi Jiangsu Province, China

TELE: 86-510-82732223

FAX: 86-510-82720101-8014

Web : www.dldevelop.com

Email: info@dldevelop.com.cn service@dldevelop.com.cn

Product name: Rabbit anti-Caspase 3 p17 Antibody

Catalog: DL90142A

Synonyms: CPP32; Caspase-3; CASP-3; Apopain; Cysteine protease CPP32; CPP-32; Protein Yama; SREBP cleavage activity 1; SCA-1

Immunogen: KLH-conjugated synthetic peptide encompassing a sequence within the center region of human Caspase 3 p17. The exact sequence is proprietary.

Form: Liquid

Concentration: 1mg/mL

Size: 100 ul/50 ul

Host: Rabbit

Reactivity:

Application: WB

Human, Mouse, Rat, Bovine, Dog, Pi

g

Clonality: Polyclonal

Dilution: WB (1/500 - 1/1000)

Entrez Gene: 836/12367/25402

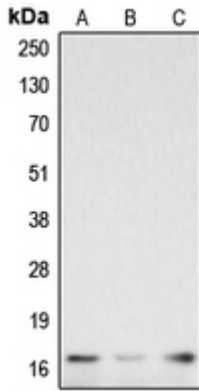
SwissProt: P42574/P70677/P55213

Purification: The antibody was purified by immunogen affinity chromatography.

Buffer: Liquid in 0.42% Potassium phosphate, 0.87% Sodium chloride, pH 7.3, 30% glycerol, and 0.01% sodium azide.

WB description:

Western blot analysis of Caspase 3 p17 expression in HeLa LPS-treated (A), Raw264.7 LPS-treated (B), PC12 LPS-treated (C) whole cell lysates.



Storage:

Store at -20°C. Avoid repeated freeze / thaw cycles.