

Manufacturer/Supplier:

WUXI DONGLIN SCI&TECH DEVELOPMENT CO., LTD

Address: A1-203 Mingpin CityII, No.8 Xihudong Road, Liangxi District
Wuxi Jiangsu Province, China

TELE: 86-510-82732223

FAX: 86-510-82720101-8014

Web : www.dldevelop.com

Email: info@dldevelop.com.cn service@dldevelop.com.cn

Product name: Rabbit anti-CaMK2 beta Antibody

Catalog: DL90127A

Synonyms: CAM2; CAMK2; CAMKB;
Calcium/calmodulin-dependent protein kinase type
II subunit beta; CaM kinase II subunit beta;
CaMK-II subunit beta

Immunogen: KLH-conjugated synthetic peptide encompassing a
sequence within the N-term region of human
CaMK2 beta. The exact sequence is proprietary.

Form: Liquid

Concentration: 1mg/mL

Size: 100 ul/50 ul

Host: Rabbit

Reactivity:

Application: WB

Human,Mouse,Rat,Monkey

Clonality: Polyclonal

Dilution: WB (1/500 - 1/1000)

Entrez Gene: 816/12323/24245

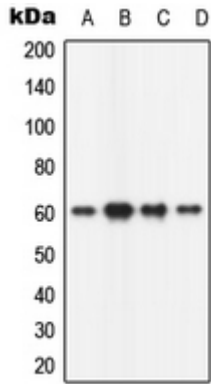
SwissProt: Q13554/P28652/P08413

Purification: The antibody was purified by immunogen affinity chromatography.

Buffer: Liquid in 0.42% Potassium phosphate, 0.87% Sodium chloride, pH 7.3, 30% glycerol, and 0.01% sodium azide.

WB description:

Western blot analysis of CaMK2 beta expression in HeLa (A), mouse brain (B), rat brain (C), PC12 (D) whole cell lysates.



Storage:

Store at -20°C. Avoid repeated freeze / thaw cycles.