

Manufacturer/Supplier:

WUXI DONGLIN SCI&TECH DEVELOPMENT CO., LTD

Address: A1-203 Mingpin CityII, No.8 Xihudong Road, Liangxi District
Wuxi Jiangsu Province, China

TELE: 86-510-82732223

FAX: 86-510-82720101-8014

Web : www.dldevelop.com

Email: info@dldevelop.com.cn service@dldevelop.com.cn

Product name: Rabbit anti-CD167a Antibody

Catalog: DL90124A

Synonyms: CAK; EDDR1; NEP; NTRK4; PTK3A; RTK6;
TRKE; Epithelial discoidin domain-containing
receptor 1; Epithelial discoidin domain receptor 1;
CD167 antigen-like family member A; Cell
adhesion kinase; Discoidin receptor tyrosine kinase;
HGK2; Mammary carcinoma kin

Immunogen: KLH-conjugated synthetic peptide encompassing a
sequence within the center region of human
CD167a. The exact sequence is proprietary.

Form: Liquid

Concentration: 1mg/mL

Size: 100 ul/50 ul

Host: Rabbit

Reactivity: Human

Application: WB, IP

Clonality: Polyclonal

Dilution: WB (1/500 - 1/1000), IP
(1/10 - 1/100)

Entrez Gene: 780

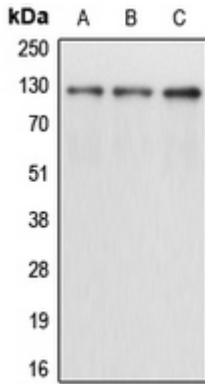
SwissProt: Q08345

Purification: The antibody was purified by immunogen affinity chromatography.

Buffer: Liquid in 0.42% Potassium phosphate, 0.87% Sodium chloride, pH 7.3, 30% glycerol, and 0.01% sodium azide.

WB description:

Western blot analysis of CD167a expression in A431 (A), K562 (B), T47D (C) whole cell lysates.



IP description:

Storage:

Store at -20°C. Avoid repeated freeze / thaw cycles.