

Manufacturer/Supplier:

WUXI DONGLIN SCI&TECH DEVELOPMENT CO., LTD

Address: A1-203 Mingpin CityII, No.8 Xihudong Road, Liangxi District
Wuxi Jiangsu Province, China

TELE: 86-510-82732223

FAX: 86-510-82720101-8014

Web : www.dldevelop.com

Email: info@dldevelop.com.cn service@dldevelop.com.cn

Product name: Rabbit anti-ATP6AP1 Antibody

Catalog: DL90087A

Synonyms: ATP6IP1; ATP6S1; VATPS1; XAP3; V-type proton ATPase subunit S1; V-ATPase subunit S1; Protein XAP-3; V-ATPase Ac45 subunit; V-ATPase S1 accessory protein; Vacuolar proton pump subunit S1

Immunogen: KLH-conjugated synthetic peptide encompassing a sequence within the C-term region of human ATP6AP1. The exact sequence is proprietary.

Form: Liquid

Concentration: 1mg/mL

Size: 100 ul/50 ul

Host: Rabbit

Reactivity:

Human, Mouse, Rat, Bovine, Pig

Application: WB**Clonality:** Polyclonal**Dilution:** WB (1/500 - 1/1000)

Entrez Gene: 537/54411/83615

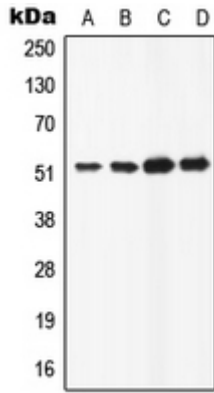
SwissProt: Q15904/Q9R1Q9/O54715

Purification: The antibody was purified by immunogen affinity chromatography.

Buffer: Liquid in 0.42% Potassium phosphate, 0.87% Sodium chloride, pH 7.3, 30% glycerol, and 0.01% sodium azide.

WB description:

Western blot analysis of ATP6AP1 expression in HeLa (A), HepG2 (B), Raw264.7 (C), H9C2 (D) whole cell lysates.



Storage:

Store at -20°C. Avoid repeated freeze / thaw cycles.