

Manufacturer/Supplier:

WUXI DONGLIN SCI&TECH DEVELOPMENT CO., LTD

Address: A1-203 Mingpin CityII, No.8 Xihudong Road. Liangxi District
Wuxi Jiangsu Province, China

TELE: 86-510-82732223

FAX: 86-510-82720101-8014

Web : www.dldevelop.com

Email: info@dldevelop.com.cn service@dldevelop.com.cn

Product name: Rabbit anti-ATP6V1B1 Antibody

Catalog: DL90086A

Synonyms: ATP6B1; VATB; VPP3; V-type proton ATPase subunit B, kidney isoform; V-ATPase subunit B 1; Endomembrane proton pump 58 kDa subunit; Vacuolar proton pump subunit B 1

Immunogen: KLH-conjugated synthetic peptide encompassing a sequence within the C-term region of human ATP6V1B1. The exact sequence is proprietary.

Form: Liquid

Concentration: 1mg/mL

Size: 100 ul/50 ul

Host: Rabbit

Reactivity:

Application: WB

Human,Mouse,Rat,Bovine

Clonality: Polyclonal

Dilution: WB (1/500 - 1/1000)

Entrez Gene: 525

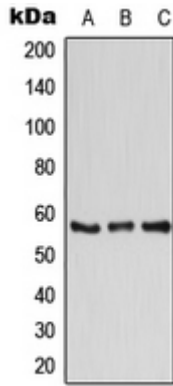
SwissProt: P15313

Purification: The antibody was purified by immunogen affinity chromatography.

Buffer: Liquid in 0.42% Potassium phosphate, 0.87% Sodium chloride, pH 7.3, 30% glycerol, and 0.01% sodium azide.

WB description:

Western blot analysis of ATP6V1B1 expression in K562 (A), Raw264.7 (B), PC12 (C) whole cell lysates.



Storage:

Store at -20°C. Avoid repeated freeze / thaw cycles.