

Manufacturer/Supplier:

WUXI DONGLIN SCI&TECH DEVELOPMENT CO., LTD

Address: A1-203 Mingpin CityII, No.8 Xihudong Road, Liangxi District
Wuxi Jiangsu Province, China

TELE: 86-510-82732223

FAX: 86-510-82720101-8014

Web : www.dldevelop.com

Email: info@dldevelop.com.cn service@dldevelop.com.cn

Product name: Rabbit anti-A-RAF (pY302) Antibody

Catalog: DL90072A

Synonyms: ARAF1; PKS; PKS2; Serine/threonine-protein kinase A-Raf; Proto-oncogene A-Raf; Proto-oncogene A-Raf-1; Proto-oncogene Pks

Immunogen: KLH-conjugated synthetic peptide encompassing a sequence within the center region of human A-RAF. The exact sequence is proprietary.

Form: Liquid

Concentration: 1mg/mL

Size: 100 ul/50 ul

Host: Rabbit

Reactivity:

Application: WB

Human, Mouse, Rat, Bovine, Pig, Sh

eep

Clonality: Polyclonal

Dilution: WB (1/500 - 1/1000)

Entrez Gene: 369/11836/64363

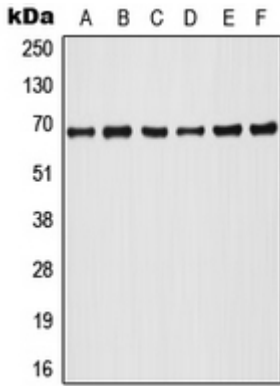
SwissProt: P10398/P04627/P14056

Purification: The antibody was purified by immunogen affinity chromatography.

Buffer: Liquid in 0.42% Potassium phosphate, 0.87% Sodium chloride, pH 7.3, 30% glycerol, and 0.01% sodium azide.

WB description:

Western blot analysis of A-RAF (pY302) expression in HeLa PMA-treated (A), Raji (B), HT29 (C), NIH3T3 (D), SP2/0 PMA-treated (E), PC12 PMA-treated (F) whole cell lysates.



Storage:

Store at -20°C. Avoid repeated freeze / thaw cycles.