

Manufacturer/Supplier:

WUXI DONGLIN SCI&TECH DEVELOPMENT CO., LTD

Address: A1-203 Mingpin CityII, No.8 Xihudong Road, Liangxi District
Wuxi Jiangsu Province, China

TELE: 86-510-82732223

FAX: 86-510-82720101-8014

Web : www.dldevelop.com

Email: info@dldevelop.com.cn service@dldevelop.com.cn

Product name: Rabbit anti-Annexin A2 Antibody

Catalog: DL90050A

Synonyms: ANX2; ANX2L4; CAL1H; LPC2D; Annexin A2;
Annexin II; Annexin-2; Calpactin I heavy chain;
Calpactin-1 heavy chain; Chromobindin-8;
Lipocortin II; Placental anticoagulant protein IV;
PAP-IV; Protein I; p36

Immunogen: KLH-conjugated synthetic peptide encompassing a
sequence within the center region of human
Annexin A2. The exact sequence is proprietary.

Form: Liquid

Concentration: 1mg/mL

Size: 100 ul/50 ul

Host: Rabbit

Reactivity:

Human, Mouse, Rat, Bovine, Dog, Pig, Sheep

Application: WB**Clonality:** Polyclonal**Dilution:** WB (1/500 - 1/1000)**Entrez Gene:**

302/12306/56611

SwissProt:

P07355/P07356/Q07936

Purification:

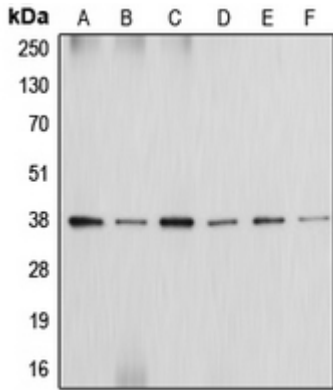
The antibody was purified by immunogen affinity chromatography.

Buffer:

Liquid in 0.42% Potassium phosphate, 0.87% Sodium chloride, pH 7.3, 30% glycerol, and 0.01% sodium azide.

WB description:

Western blot analysis of Annexin A2 expression in HeLa (A), MCF7 (B), Raw264.7 (C), H9C2 (D), K562 (E), NIH3T3 (F) whole cell lysates.



Storage:

Store at -20°C. Avoid repeated freeze / thaw cycles.