

Manufacturer/Supplier:

WUXI DONGLIN SCI&TECH DEVELOPMENT CO., LTD

Address: A1-203 Mingpin CityII, No.8 Xihudong Road, Liangxi District
Wuxi Jiangsu Province, China

TELE: 86-510-82732223

FAX: 86-510-82720101-8014

Web : www.dldevelop.com

Email: info@dldevelop.com.cn service@dldevelop.com.cn

Product name: Rabbit anti-CD13 Antibody

Catalog: DL90047A

Synonyms: APN; CD13; PEPN; Aminopeptidase N; AP-N;
hAPN; Alanyl aminopeptidase; Aminopeptidase M;
AP-M; Microsomal aminopeptidase; Myeloid
plasma membrane glycoprotein CD13; gp150;
CD13

Immunogen: KLH-conjugated synthetic peptide encompassing a
sequence within the C-term region of human CD13.
The exact sequence is proprietary.

Form: Liquid

Concentration: 1mg/mL

Size: 100 ul/50 ul

Host: Rabbit

Reactivity: Human, Mouse

Application: WB

Clonality: Polyclonal

Dilution: WB (1/500 - 1/1000)

Entrez Gene: 290/16790

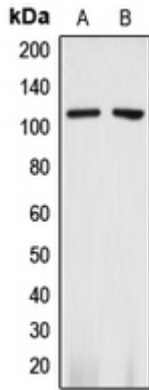
SwissProt: P15144/P97449

Purification: The antibody was purified by immunogen affinity chromatography.

Buffer: Liquid in 0.42% Potassium phosphate, 0.87% Sodium chloride, pH 7.3, 30% glycerol, and 0.01% sodium azide.

WB description:

Western blot analysis of CD13 expression in A375 (A), THP1 (B) whole cell lysates.



Storage:

Store at -20°C. Avoid repeated freeze / thaw cycles.