

**Manufacturer/Supplier:**

WUXI DONGLIN SCI&TECH DEVELOPMENT CO., LTD

**Address:** A1-203 Mingpin CityII, No.8 Xihudong Road, Liangxi District  
Wuxi Jiangsu Province, China

TELE: 86-510-82732223

FAX: 86-510-82720101-8014

**Web :** [www.dldevelop.com](http://www.dldevelop.com)

Email: [info@dldevelop.com.cn](mailto:info@dldevelop.com.cn) [service@dldevelop.com.cn](mailto:service@dldevelop.com.cn)

**Product name:** Rabbit anti-AKT (pT308) Antibody

**Catalog:** DL90032A

**Synonyms:** AKT1; PKB; RAC; RAC-alpha  
serine/threonine-protein kinase; Protein kinase B;  
PKB; Protein kinase B alpha; PKB alpha;  
Proto-oncogene c-Akt; RAC-PK-alpha; AKT2;  
RAC-beta serine/threonine-protein kinase; Protein  
kinase Akt-2; Protein kinase B beta; PKB beta;

**Immunogen:** KLH-conjugated synthetic peptide encompassing a  
sequence within the center region of human AKT.  
The exact sequence is proprietary.

**Form:** Liquid

**Concentration:** 1mg/mL

**Size:** 100 ul/50 ul

**Host:** Rabbit

**Reactivity:**

Human, Mouse, Rat, Bovine, Chicken, Zebrafish

**Application:** WB, IF/IC, IP**Clonality:** Polyclonal

**Dilution:** WB (1/500 - 1/1000),  
IF/IC (1/100 - 1/500), IP (1/10 - 1/100)

**Entrez Gene:**

11651; 11652; 23797/24185; 25233; 29414

**SwissProt:**

P31749; P31751; Q9Y243/P31750; Q60823;  
Q9WUA6/P47196; P47197; Q63484

**Purification:**

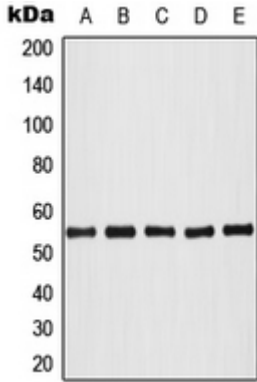
The antibody was purified by immunogen affinity chromatography.

**Buffer:**

Liquid in 0.42% Potassium phosphate, 0.87% Sodium chloride, pH 7.3, 30% glycerol, and 0.01% sodium azide.

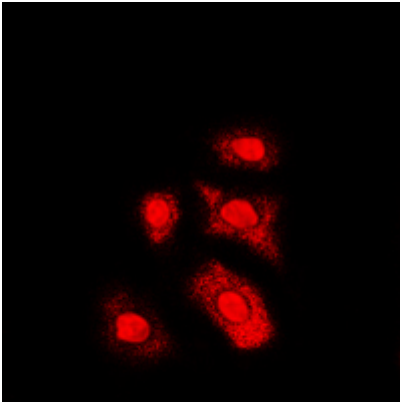
**WB description:**

Western blot analysis of AKT (pT308) expression in HeLa colchicine-treated (A), HL60 (B), NIH3T3 (C), SP2/0 colchicine-treated (D), PC12 colchicine-treated (E) whole cell lysates.



### IF/ICC description:

Immunofluorescent analysis of AKT (pT308) staining in HL60 cells. Formalin-fixed cells were permeabilized with 0.1% Triton X-100 in TBS for 5-10 minutes and blocked with 3% BSA-PBS for 30 minutes at room temperature. Cells were probed with the primary ant



### IP description:

**Storage:**

Store at -20°C. Avoid repeated freeze / thaw cycles.