

Manufacturer/Supplier:

WUXI DONGLIN SCI&TECH DEVELOPMENT CO., LTD

Address: A1-203 Mingpin CityII, No.8 Xihudong Road, Liangxi District
Wuxi Jiangsu Province, China

TELE: 86-510-82732223

FAX: 86-510-82720101-8014

Web : www.dldevelop.com

Email: info@dldevelop.com.cn service@dldevelop.com.cn

Product name: Rabbit anti-AKT (pS473) Antibody

Catalog: DL90031A

Synonyms: AKT1; PKB; RAC; RAC-alpha
serine/threonine-protein kinase; Protein kinase B;
PKB; Protein kinase B alpha; PKB alpha;
Proto-oncogene c-Akt; RAC-PK-alpha; AKT2;
RAC-beta serine/threonine-protein kinase; Protein
kinase Akt-2; Protein kinase B beta; PKB beta;

Immunogen: KLH-conjugated synthetic peptide encompassing a
sequence within the C-term region of human AKT.
The exact sequence is proprietary.

Form: Liquid

Concentration: 1mg/mL

Size: 100 ul/50 ul

Host: Rabbit

Reactivity:

Human, Mouse, Rat, Bovine, Sheep,
Zebrafish

Application: WB, IHC**Clonality:** Polyclonal

Dilution: WB (1/500 - 1/1000),
IHC (1/100 - 1/200)

Entrez Gene:

11651; 11652; 23797/24185; 25233; 29414

SwissProt:

P31749; P31751; Q9Y243/P31750; Q60823;
Q9WUA6/P47196; P47197; Q63484

Purification:

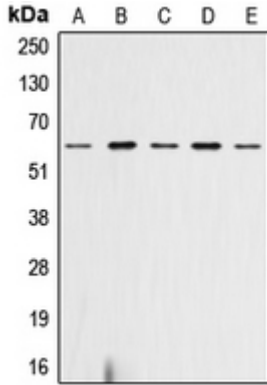
The antibody was purified by immunogen affinity chromatography.

Buffer:

Liquid in 0.42% Potassium phosphate, 0.87% Sodium chloride, pH 7.3, 30% glycerol, and 0.01% sodium azide.

WB description:

Western blot analysis of AKT (pS473) expression in HeLa (A), SP2/0 (B), mouse heart (C), rat heart (D), rat liver (E) whole cell lysates.



IHC description:

Immunohistochemical analysis of AKT (pS473) staining in human breast cancer formalin fixed paraffin embedded tissue section. The section was pre-treated using heat mediated antigen retrieval with sodium citrate buffer (pH 6.0). The section was then incubated with the antibody at room temperature and detected using an HRP conjugated compact polymer system. DAB was used as the chromogen. The section was then counterstained with haematoxylin and mounted with DPX.

Storage:

Store at -20°C. Avoid repeated freeze / thaw cycles.