

Manufacturer/Supplier:

WUXI DONGLIN SCI&TECH DEVELOPMENT CO., LTD

Address: A1-203 Mingpin CityII, No.8 Xihudong Road, Liangxi District
Wuxi Jiangsu Province, China

TELE: 86-510-82732223

FAX: 86-510-82720101-8014

Web : www.dldevelop.com

Email: info@dldevelop.com.cn service@dldevelop.com.cn

Product name: Rabbit anti-Beta-2 Adrenergic Receptor (pS346)
Antibody

Catalog: DL90027A

Synonyms: ADRB2R; B2AR; Beta-2 adrenergic receptor;
Beta-2 adrenoreceptor; Beta-2 adrenoceptor

Immunogen: KLH-conjugated synthetic peptide encompassing a
sequence within the C-term region of human Beta-2
Adrenergic Receptor. The exact sequence is
proprietary.

Form: Liquid

Concentration: 1mg/mL

Size: 100 ul/50 ul

Host: Rabbit

Reactivity:

Application: WB

Human, Mouse, Rat, Bovine, Dog, Sheep

Clonality: Polyclonal

Dilution: WB (1/500 - 1/1000)

Entrez Gene: 154/11555

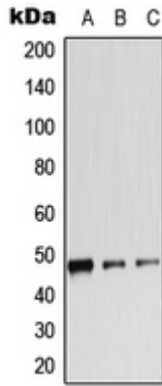
SwissProt: P07550/P18762/P10608

Purification: The antibody was purified by immunogen affinity chromatography.

Buffer: Liquid in 0.42% Potassium phosphate, 0.87% Sodium chloride, pH 7.3, 30% glycerol, and 0.01% sodium azide.

WB description:

Western blot analysis of Beta-2 Adrenergic Receptor (pS346) expression in HepG2 PMA-treated (A), mouse spleen (B), rat spleen (C) whole cell lysates.



Storage:

Store at -20°C. Avoid repeated freeze / thaw cycles.