

Manufacturer/Supplier:

WUXI DONGLIN SCI&TECH DEVELOPMENT CO., LTD

Address: A1-203 Mingpin CityII, No.8 Xihudong Road, Liangxi District
Wuxi Jiangsu Province, China

TELE: 86-510-82732223

FAX: 86-510-82720101-8014

Web : www.dldevelop.com

Email: info@dldevelop.com.cn service@dldevelop.com.cn

Product name: Rabbit anti-PARP1 Antibody

Catalog: DL90025A

Synonyms: ADPRT; PPOL; Poly [ADP-ribose] polymerase 1;
PARP-1; ADP-ribosyltransferase diphtheria
toxin-like 1; ARTD1; NAD(+)
ADP-ribosyltransferase 1; ADPRT 1;
Poly[ADP-ribose] synthase 1

Immunogen: KLH-conjugated synthetic peptide encompassing a
sequence within the center region of human PARP1.
The exact sequence is proprietary.

Form: Liquid

Concentration: 1mg/mL

Size: 100 ul/50 ul

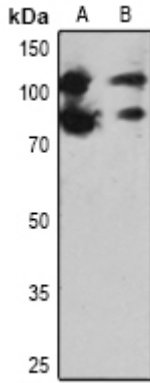
Host: Rabbit

Reactivity:

Human, Mouse, Rat, Bovine

Application: WB**Clonality:** Polyclonal**Dilution:** WB (1/500 - 1/1000)**Entrez Gene:** 142/25591**SwissProt:** P09874/P11103/P27008**Purification:** The antibody was purified by immunogen affinity chromatography.**Buffer:** Liquid in 0.42% Potassium phosphate, 0.87% Sodium chloride, pH 7.3, 30% glycerol, and 0.01% sodium azide.**WB description:**

Western blot analysis of PARP1 expression in HEK293T(A), rat brain (B) whole cell lysates.



Storage:

Store at -20°C. Avoid repeated freeze / thaw cycles.